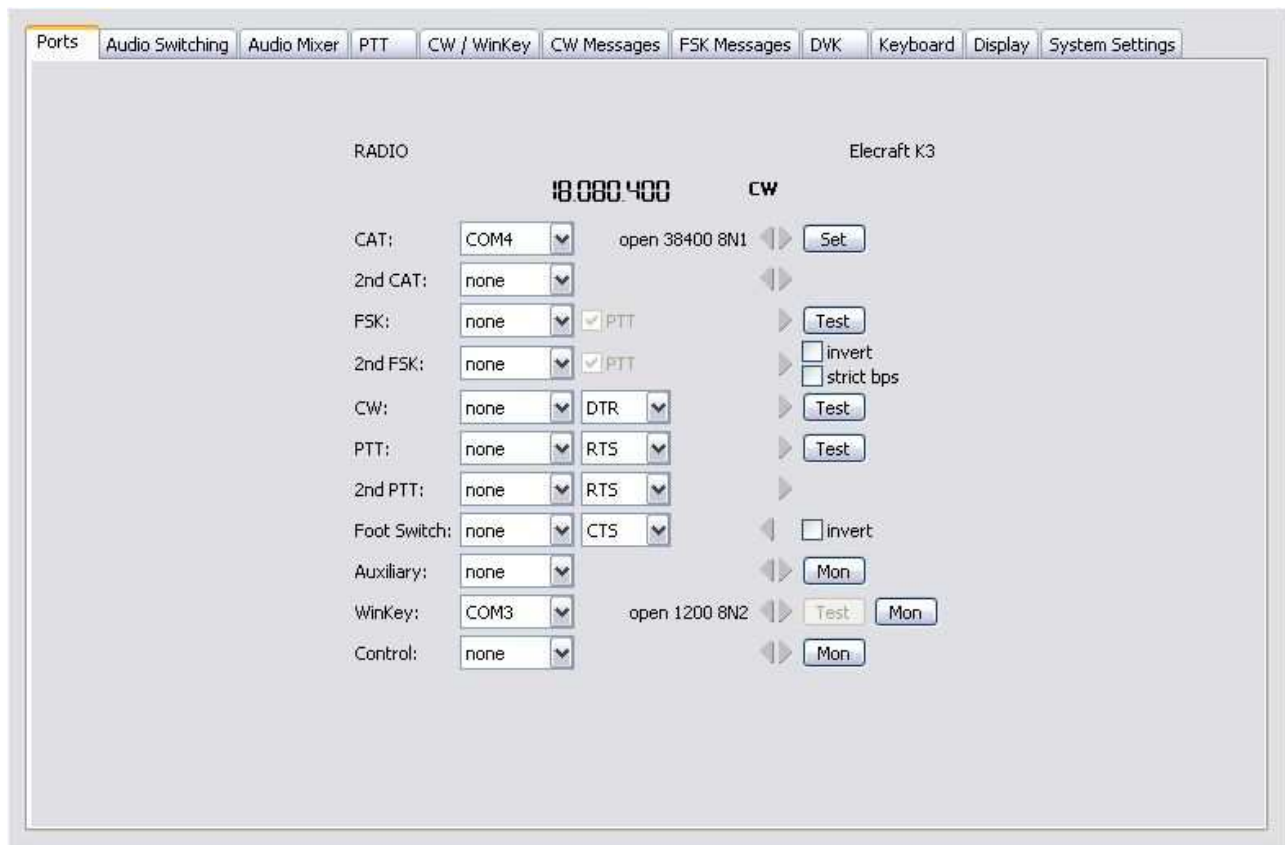


# microKEYER II and XMlog Setup

## Router setup:

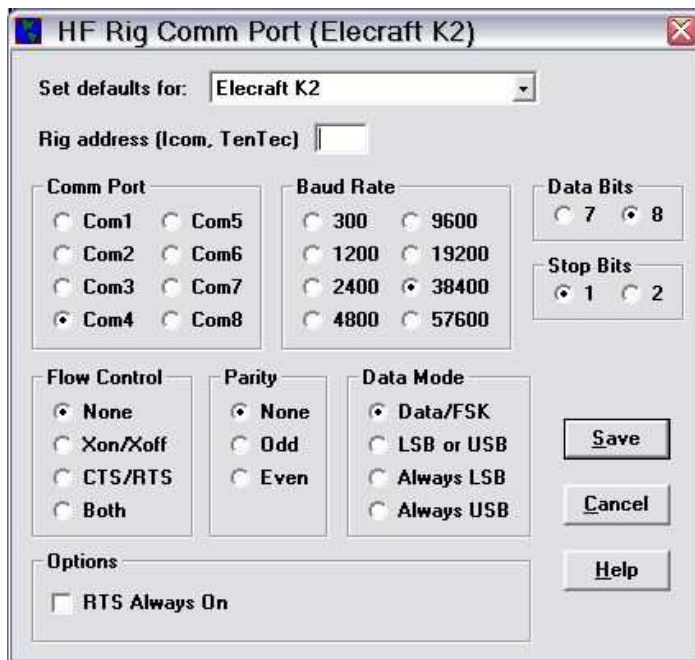
Note: The absolute port numbers do not matter. The key is consistency - the same port number must be used for a specific function every time it is used.

1. Assign the radio control virtual COM port. Click Set and select your radio from the drop down box.
2. Assign a port for WinKey
3. CW and PTT ports do not need to be assigned for XMlog.
4. Assign ports for FSK or PTT if you intend to use MMTTY, MMVARI, FLdigi or another digital program at the same time as XMlog. See guides for the digital application.



5. Save the settings to a preset by selecting **Preset | Save as**. Choose a position and name it XMlog.

## XMlog setup:



1. Click **Options | HF Rig Port Select ->**
2. Set your radio
3. Select the virtual COM port you used for Control in Router's Ports tab
4. Set BAUD, Data Bits, Stop Bits and Parity required by your radio.
5. Set Flow Control to None.

6. Click **Options | CW Options and Port Select ->**
7. Select **K1EL WinKey ...**
8. Set the port you set for WinKey on the Ports tab.

