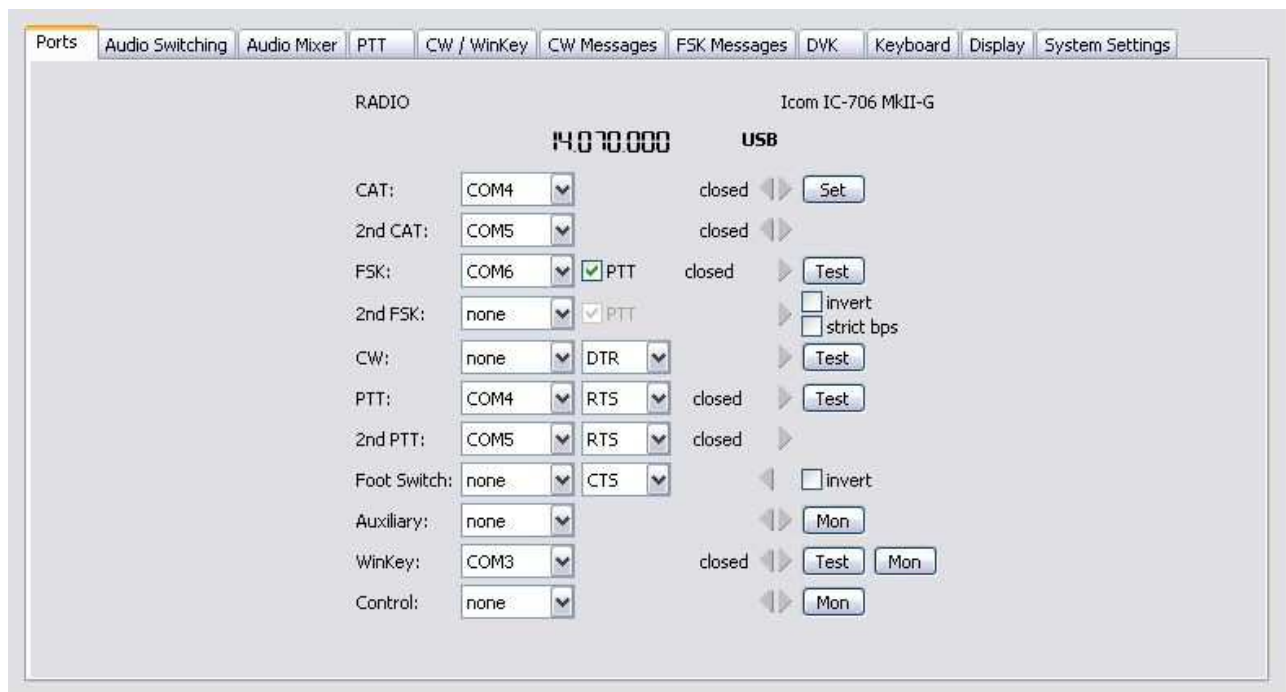


microKeyer II and WSPR Setup

Router setup:

Note: The absolute port numbers do not matter. The key is consistency - the same port number must be used for a specific function every time it is used.

1. WSPR uses a radio control port only for changing bands and tuning to a new frequency. It is convenient to use the 2nd CAT port for WSPR. This allows the CAT, FSK, PTT and WinKey ports to be used for your normal logging software.
2. Assign the **2nd PTT** port for WSPR to put the transceiver into transmit.
3. On Router's PTT tab **unchecked** "Sound card PTT."

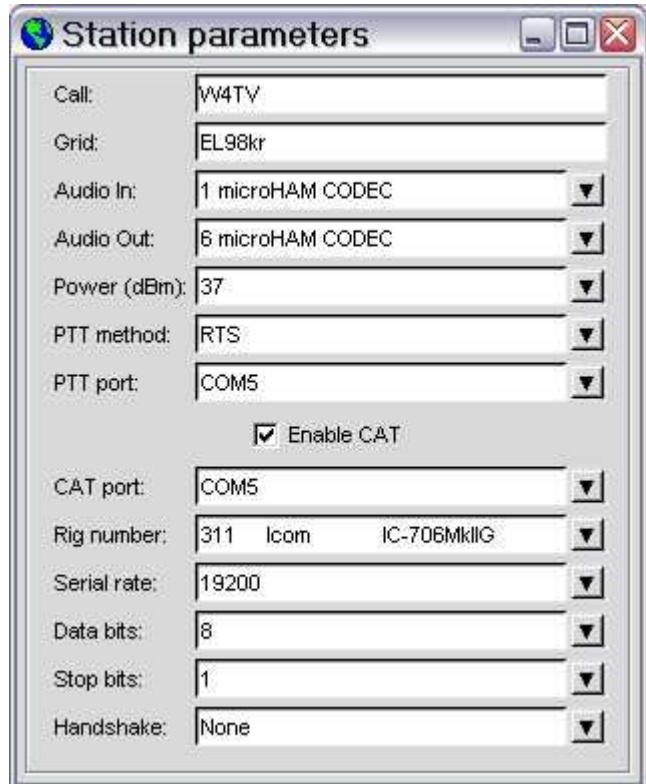


4. Save settings to a preset by selecting menu **Preset | Save as**. Choose a position and name it WSPR.

Note: when operating WSPR, microKEYER II should be configured to use the Line Input (rear) for FSK/Digital modes just as it is for AFSK or PSK31.

WSPR setup:

1. Select the **Setup | Station Parameters** or press **F2**.
2. Select **microHAM CODEC** as the Audio In and Audio Out devices.
3. Set PTT Port to the virtual serial port you assigned for **2nd PTT** in Router and set PTT Method to RTS.
4. Check Enable CAT.
5. Set CAT port to the port you set for 2nd CAT in Router
6. Configure your rig type and data communication parameters.



The screenshot shows a window titled "Station parameters" with the following fields and values:

| | |
|--|-----------------------|
| Call: | W4TV |
| Grid: | EL98kr |
| Audio In: | 1 microHAM CODEC |
| Audio Out: | 6 microHAM CODEC |
| Power (dBm): | 37 |
| PTT method: | RTS |
| PTT port: | COM5 |
| <input checked="" type="checkbox"/> Enable CAT | |
| CAT port: | COM5 |
| Rig number: | 311 Icom IC-706MkIIIG |
| Serial rate: | 19200 |
| Data bits: | 8 |
| Stop bits: | 1 |
| Handshake: | None |