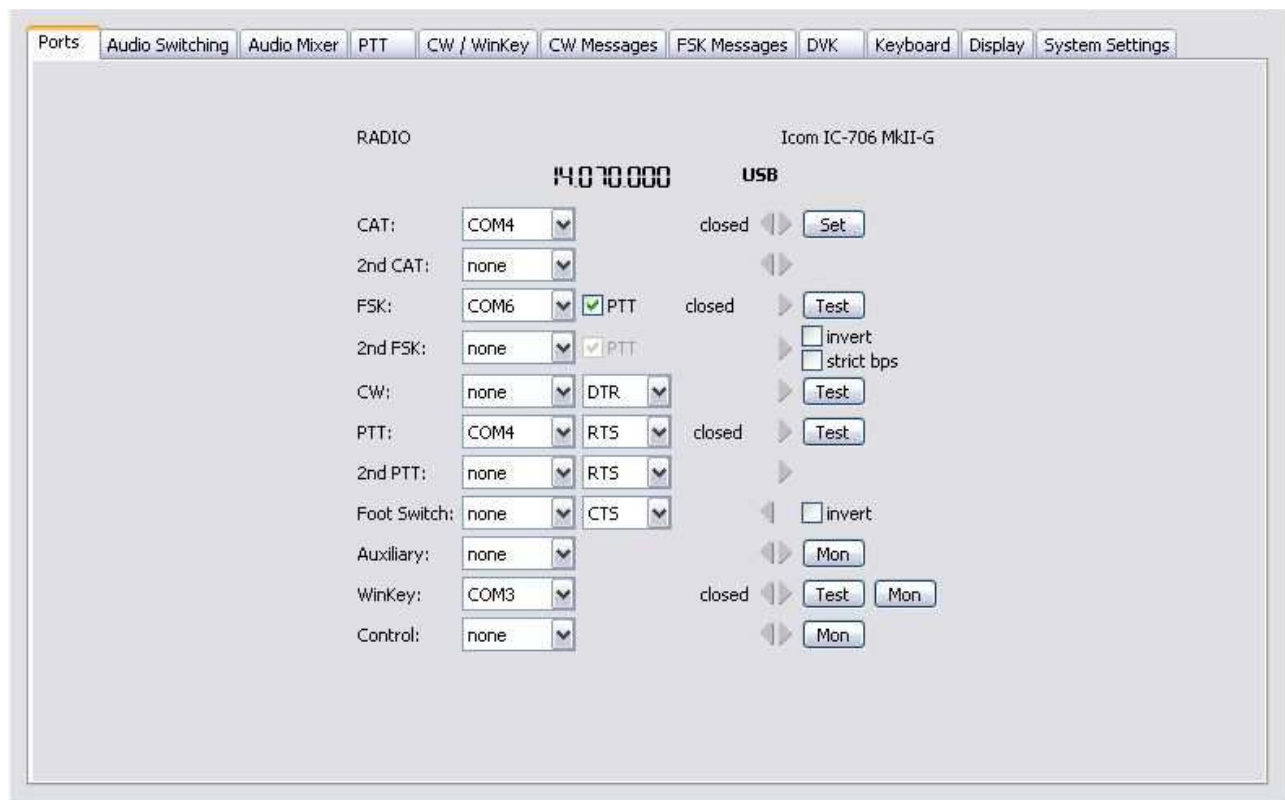


microKEYER II and TRX Manager Setup

Router setup:

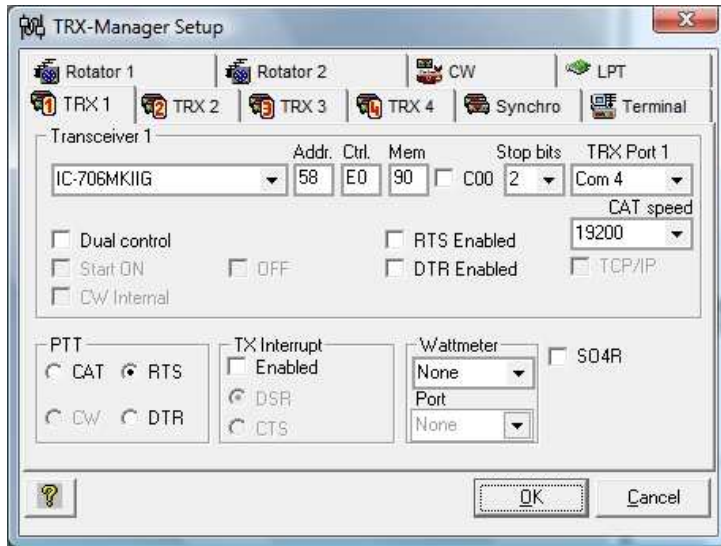
Note: The absolute port numbers do not matter. The key is consistency - the same port number must be used for a specific function every time it is used.

1. Assign the radio control virtual COM ports. Click the **Set** button and select your radio from the drop down box. Uncheck the **Disable router queries** box.
2. Assign a port for WinKey.
3. Assign a port for FSK – check the PTT box (for use with other Digital software).
4. Assign the same port for PTT as you assigned for Radio control.



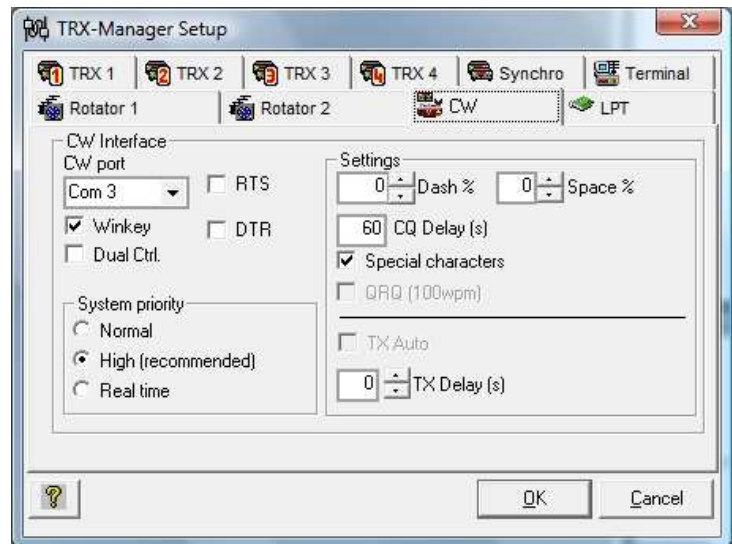
5. On the **PTT** tab, check PA PTT if *microKEYER II* will be controlling an amplifier.
6. Save settings to a preset by selecting menu **Preset | Save as**. Choose a position and name it TRX Manager.

TRX Manager setup:



1. Open **Parameters | Setup** and select the TRX tab for the radio connected to *microKEYER II* ...
2. Set the TRX Port to the virtual COM port you used for control in Router's Ports tab
3. Select the Stop Bits, CAT Speed, and address as needed for your radio.
4. Uncheck "RTS Enabled" and "DTR Enabled."
5. Set PTT to RTS.

6. Click the CW tab
7. Set the CW port to the virtual port you assigned for WinKey in Router.
8. Check "WinKey"
9. Select the Serial Port you set for WinKey in Router's Ports tab
10. Click "OK" to save your settings.



11. Open **Tools | Keyer** and click the WinKey Icom.
12. Set the WinKey parameters to match those on the CW/WinKey tab in Router. The settings in Router will be used to control WinKey operation but it is convenient to have the same settings in both locations.
13. Click OK to save your settings.

