

micro Keyer with RCKLog Setup Guide

Note: The absolute port numbers do not matter. The key is consistency - the same port number must be used for a specific function every time it is used.

1. Assign the radio control virtual COM ports. Click the Set button and select your radio from the drop down box. Uncheck the Disable router queries box.
2. Assign a port for FSK and PTT.



microHAM USB Device Router 4.0.10

Router Preset Device Virtual Port Help

micro Keyer

Ports Audio Switching Audio Mixer PTT / FSK CW / WinKey CW / FSK Messages DVK

VOX or command PTT

CDM port or WinKey PTT

Foot Switch or Hand Mic PTT

Audio switching

Fixed AAA

Follow radio mode

CW AAA VOICE CCA

FSK BBA DIGITAL BBB

Allow custom settings

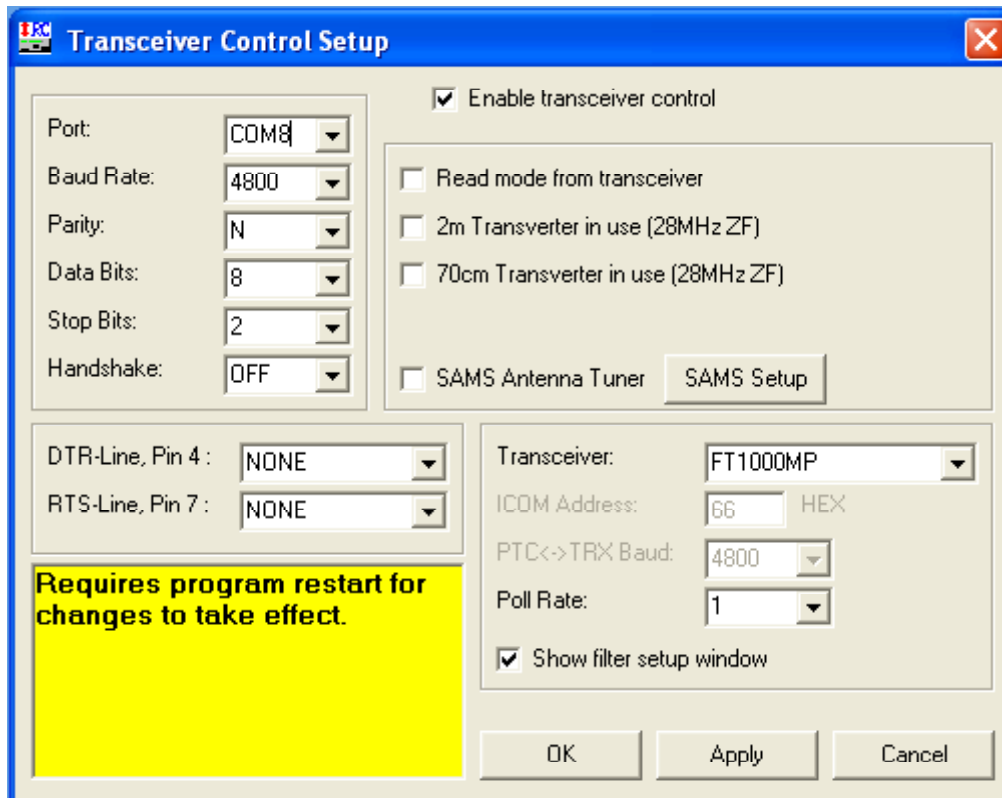
RCKRtty MMVARI RCKLog MixWin

Microphone, sound card & Radio routing setup micro KEYER v3.2 (WinKey rev. 8) connected

Configure the **RCKLog Program Setup** menu like shown:

Program Setup

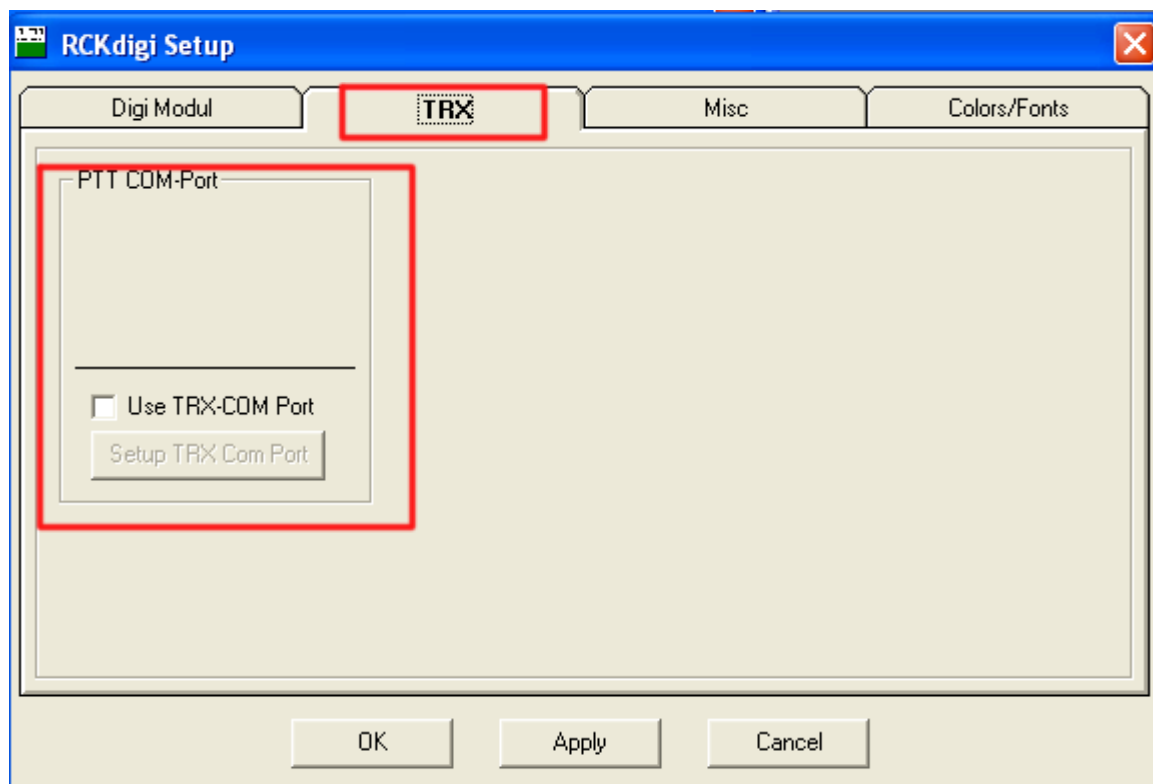
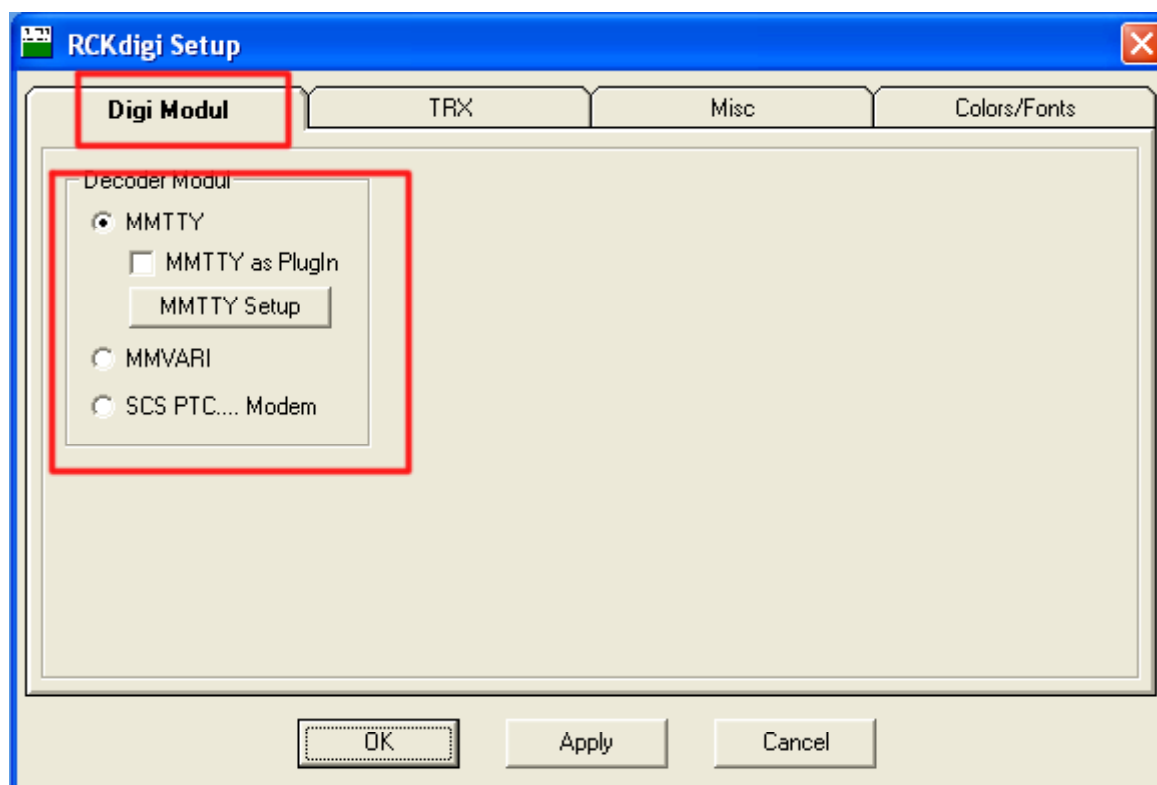
Configure the **RCKLog Transceiver Setup** menu like shown, if you are using TRX-Control:



The setup parameter shown here are for a Yaesu FT1000 MP

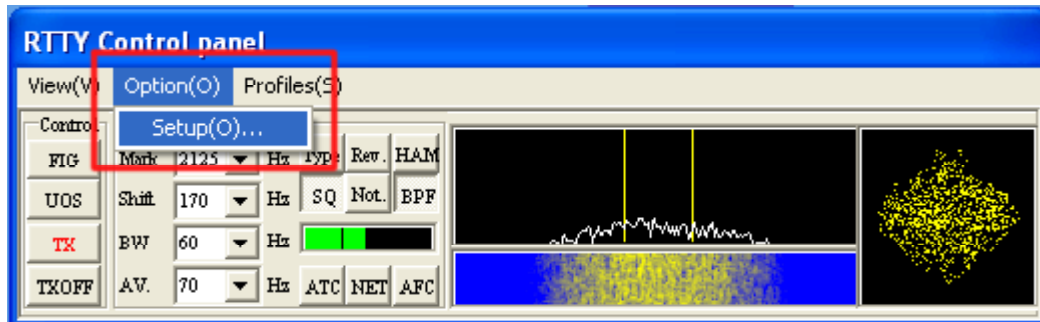
Configure the **RCKDigi Setup** menu like shown:

If you would like to run MMTTY as a PlugIn (integrated) check the box.

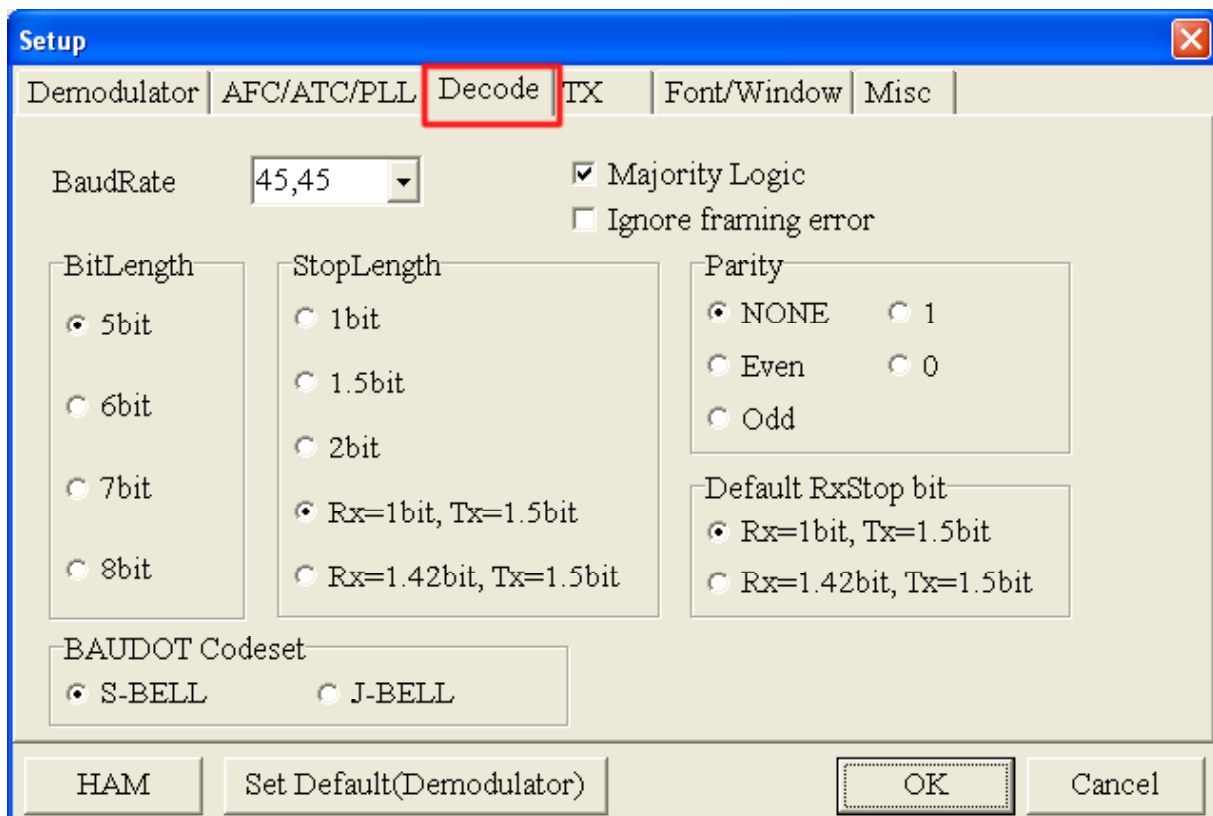


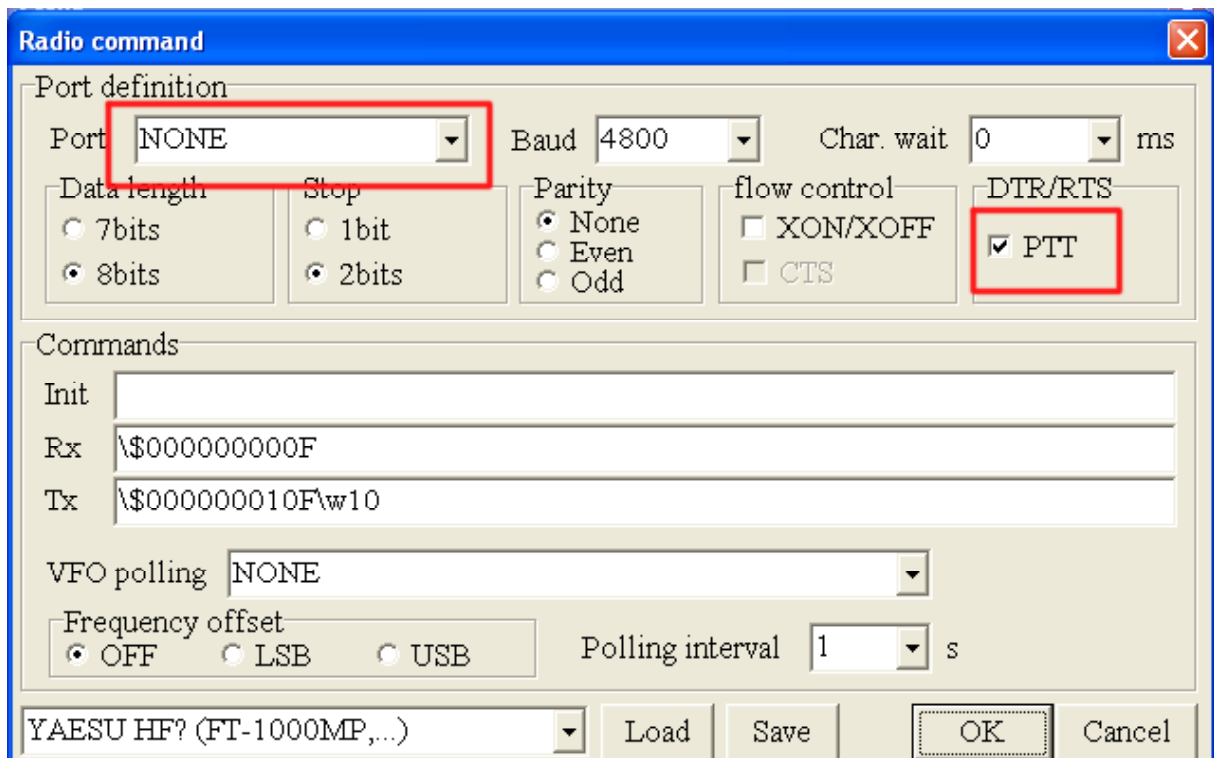
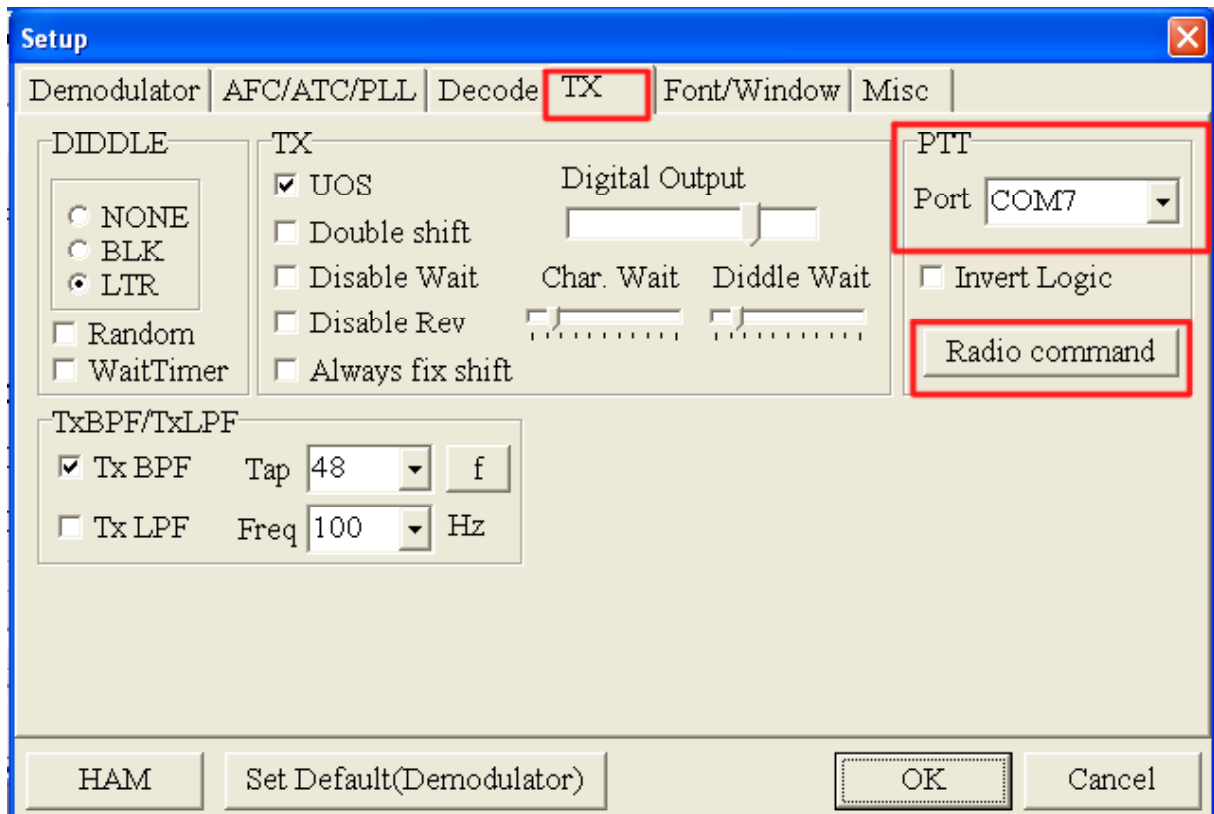
Configure the MMTTY RTTY-Engine:

To open the MMTTY Setup menu click the Setup(O) option from the Option(O) menu.

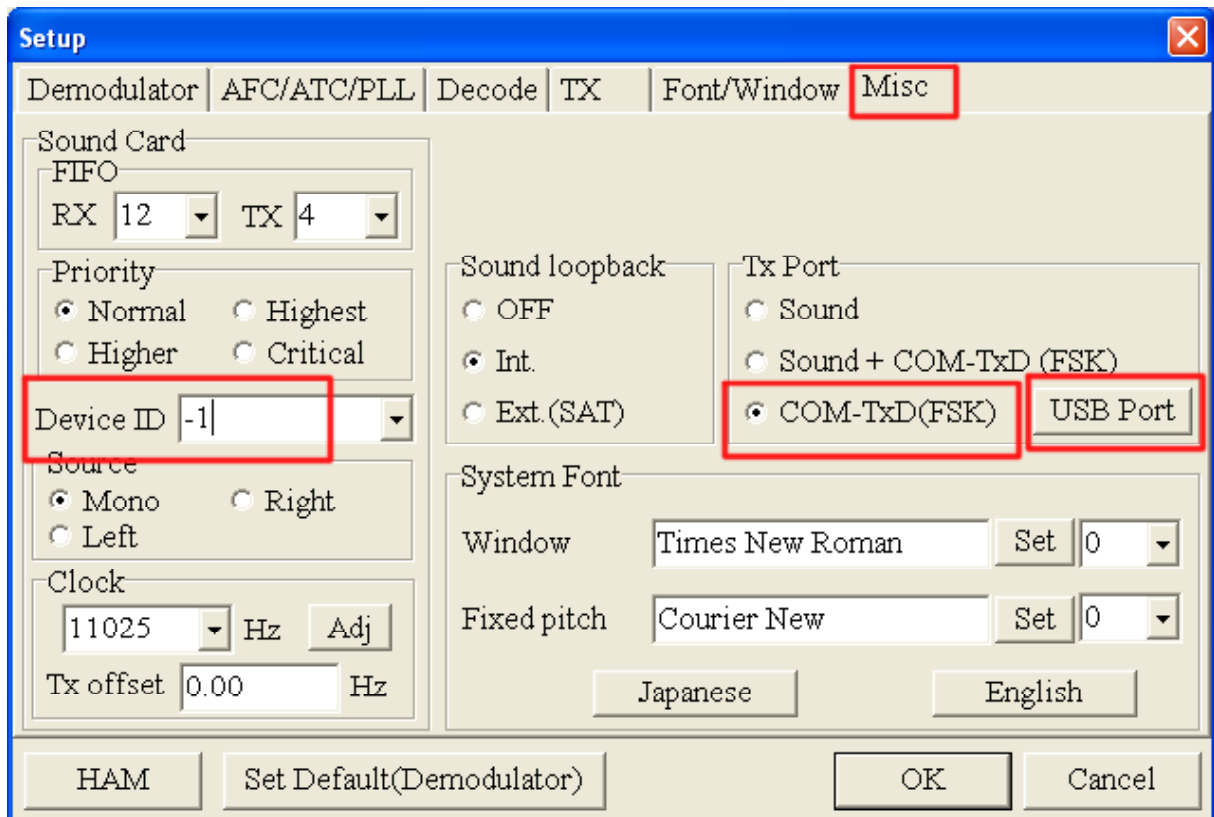


Configure MMTTY as shown.





This is the Setup for FSK:



If you want to run AFSK select the option “Sound” under “TX Port”.

