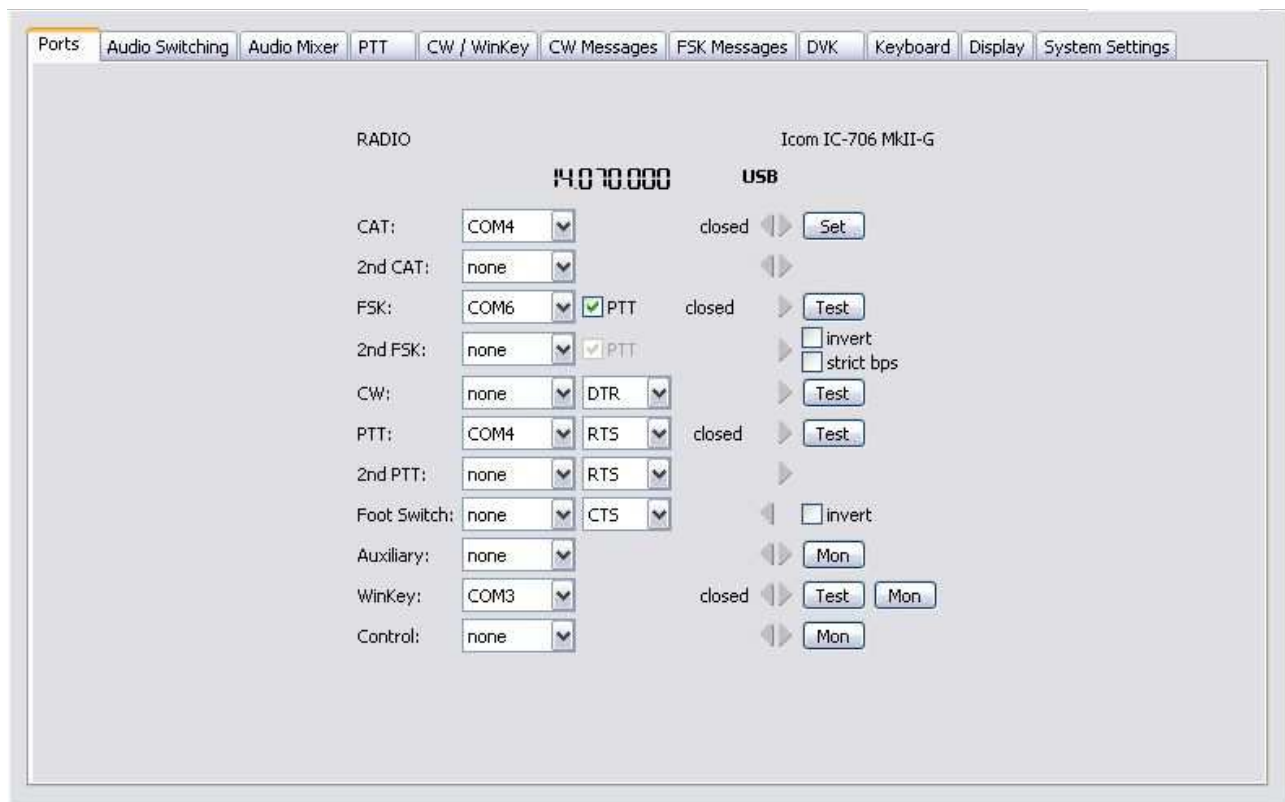


microKEYER II and Logger32 Setup

Router setup:

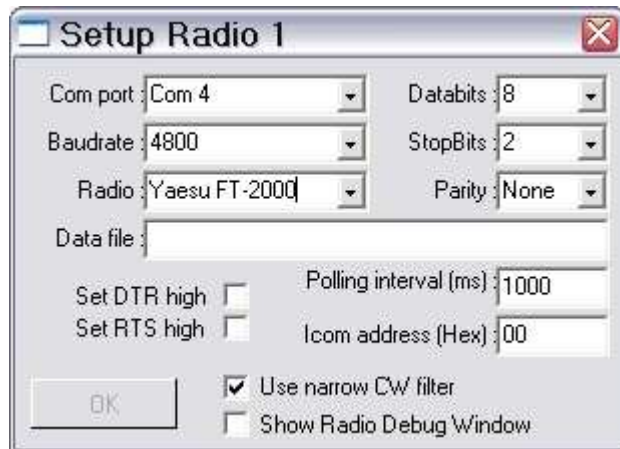
Note: The absolute port numbers do not matter. The key is consistency - the same port number must be used for a specific function every time it is used.

1. Assign the radio control virtual COM ports. Click the **Set** button and select your radio from the drop down box. Uncheck the **Disable router queries** box.
2. Assign a port for WinKey.
3. Assign a port for FSK – check the PTT box.
4. Assign the same port for PTT as you assigned for Radio control.



5. On the **Audio Switching** tab, set VOICE to "Microphone Jack, DVK control" and set FSK/DIGITAL to Line Input (rear).
6. On the **PTT/FSK** tab, set **PTT1** for VOICE, **PTT1 or QSK** for CW and **PTT2** for FSK/DIGITAL.
7. Save settings to a preset by selecting menu **Preset | Save as**. Choose a position and name it Logger32.

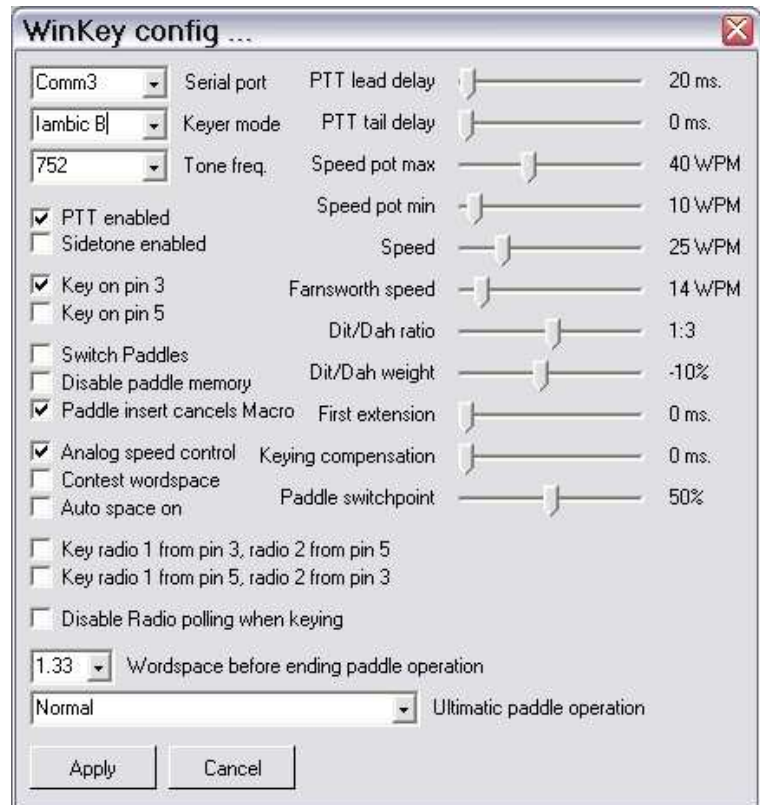
Logger32 setup:



1. Click **Setup | Radio | Radio 1 configuration ...**
2. Select the virtual COM port you used for control in Router's Ports tab
3. Select the Baud Rate, Parity, Databits, parity, Word Length, and Stop Bits settings required by your radio.
4. Uncheck "Set DTR high" and "set RTS high"

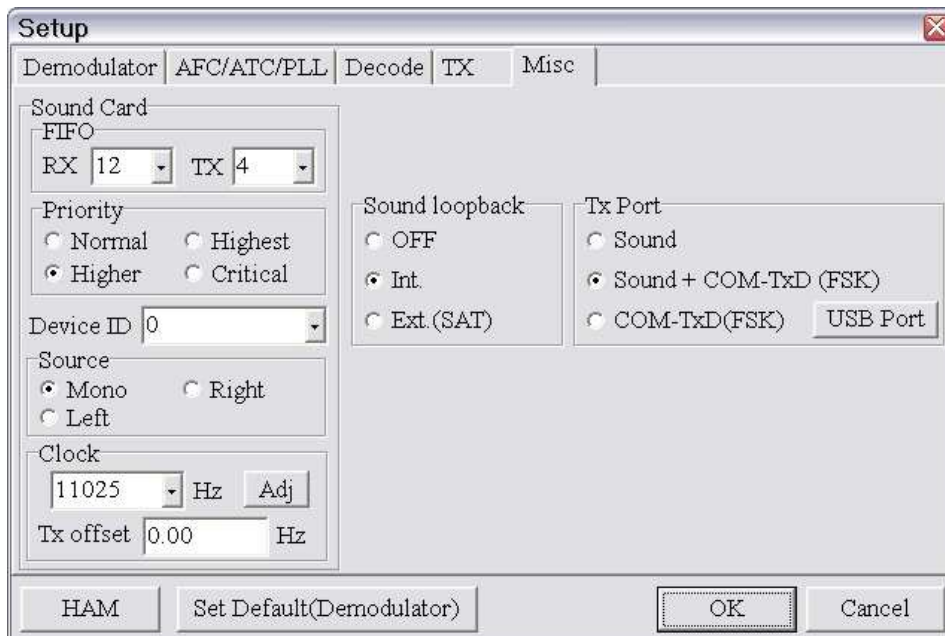
5. Click the CW icon to open the CW machine
6. Select **Config | WinKey**
7. Select **Config | Keyer Setup**
8. Select the Serial Port you set for WinKey in Router's Ports tab
9. Configure the settings you prefer for CW operation including weight, speed range for WinKey's speed pot, PTT or QSK operation, etc.

It is generally most convenient to make the CW parameters the same as you have set on Router's CW/WinKey tab.



10. Click the Recorder Icon to open the DVK
11. Select **Config | Radio PTT Config**
12. Select "RTS Keying only" and "PTT by Shared Radio port"

13. Click on the Speaker icon to open the Soundcard Data Window
14. Click **Settings | Radio PTT options**
15. Select the Serial Port you chose for FSK on Router's Ports tab
16. Select RTS Keying only
17. Select PTT by Serial Port
18. **DO NOT Check "MMTTY FSK on USB Port"!**
19. Click on Mode | MMTTY Engine | Standard RTTY (170Hz)
20. Click on the Wrench icon to Open MMTTY Setup



21. Choose the **Misc Tab**.
22. Select Source **Mono**
23. Set Clock **11025**
24. Select the proper sound card **Device ID**
To obtain the proper ID, click **Get ID** button at the Router **Audio Mixer** tab.
25. Select COM-TxD (FSK) for the TX Port.
If you want the option to switch between AFSK and FSK, select Sound + COM-TxD (FSK)

26. Click **USB port** button and choose **C: Limiting speed**

