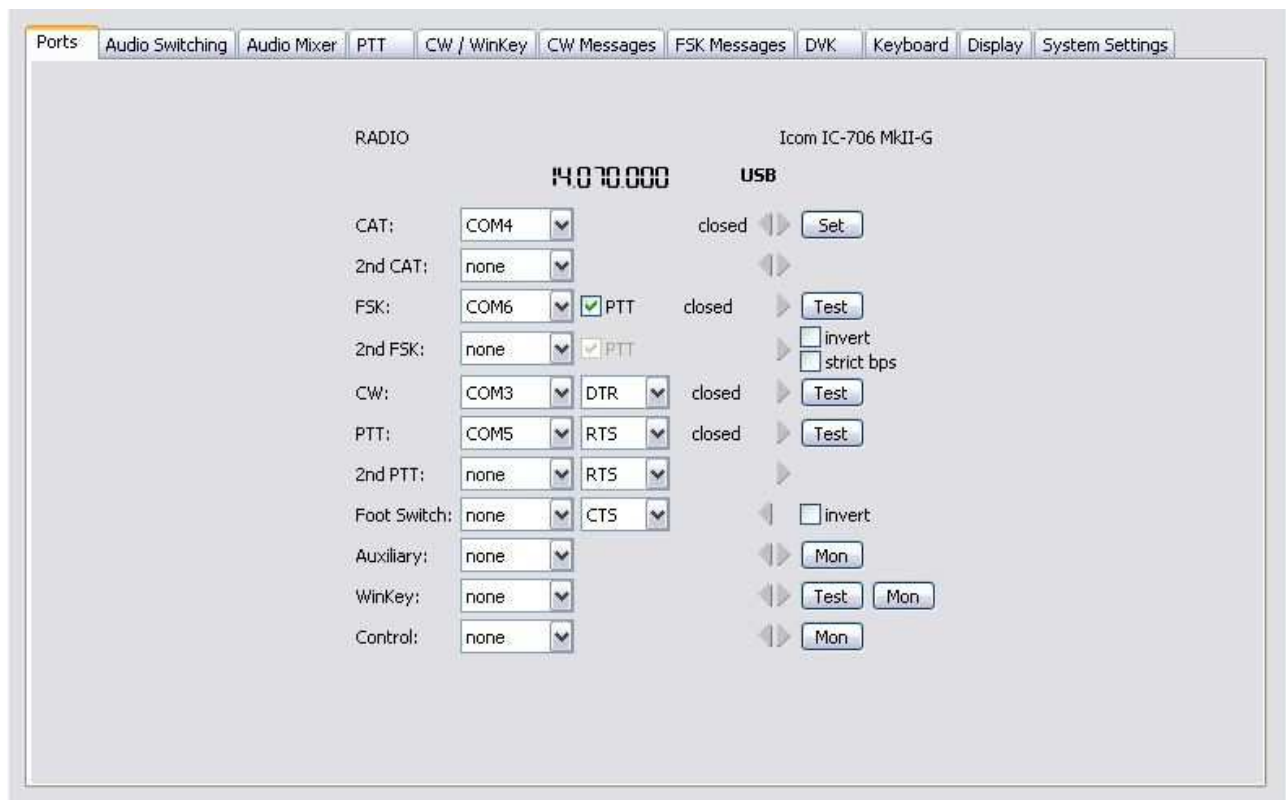


microKEYER II and Hamscope Setup

Router setup:

Note: The absolute port numbers do not matter. The key is consistency - the same port number must be used for a specific function every time it is used.

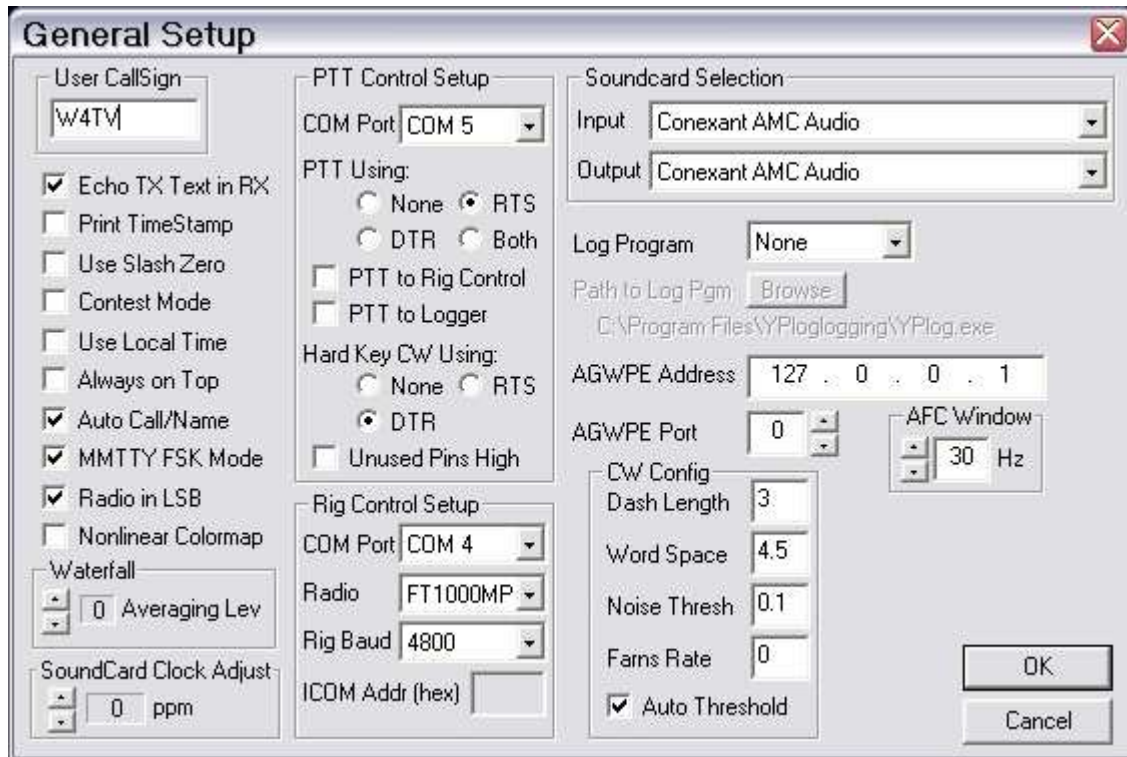
1. Assign a virtual port for radio control. Click the **Set** button and select your radio from the drop down box. Uncheck the **Disable router queries** box.
2. Assign a port for CW. Hamscope does not support Winkey - you must use serial CW.
3. Assign the same port for PTT as you used for CW.
4. Assign a port for FSK – check the PTT box. If your radio does not support FSK or you will be using AFSK, you can skip this step.



5. On the **Audio Switching** tab, set VOICE to "Microphone Jack, DVK control" and set FSK/DIGITAL to "Line Input (rear)."
6. On the **PTT** tab, select **PTT1** for VOICE, **PTT1 or QSK** for CW, and **PTT2** for FSK/DIGITAL.
7. Save the settings to a preset by selecting **Preset | Save as**. Choose a position and name it Hamscope.

Hamscope setup:

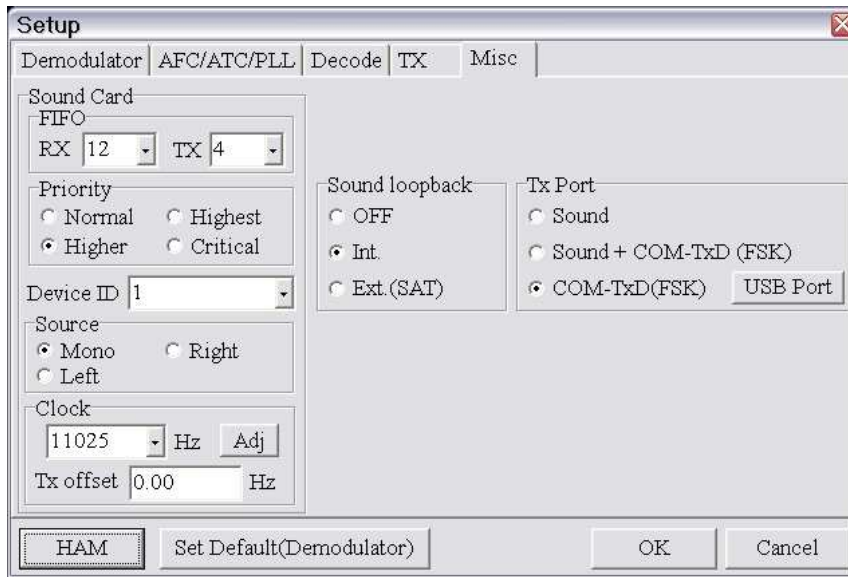
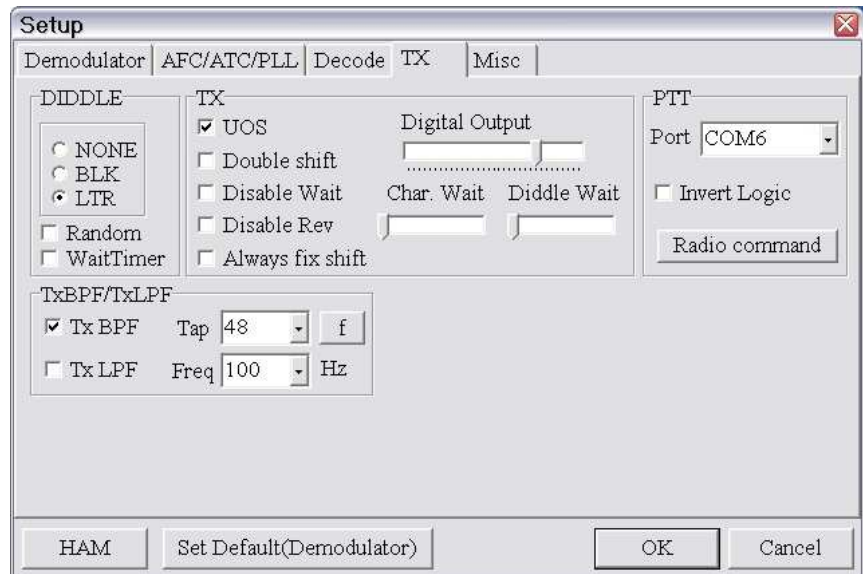
1. Click **Settings | General Setup ...**



2. If you intend to use FSK with MMTTY check the "MMTTY FSK Mode"
3. Set the COM Port in "PTT Control Setup" to the virtual port you selected for CW and PTT in Router.
4. Set "PTT Using" to RTS
5. Set "Hard Key CW Using" to DTR
6. Set the COM Port in "Rig Control Setup" to the port you selected for Radio Control in Router. Select your radio and set the data communications (Rig Baud) as required by your radio.
7. Select your Soundcard input and output
8. Click OK to save the settings

MMTTY setup:

1. Select the RTTY mode on Hamscope's main screen.
2. Click the **Options** button.
3. Select the **TX Tab ...**
4. Select the Port you configured for FSK on Router's Ports Tab in the PTT box.



5. Choose the **Misc Tab**.
 6. Select Source **Mono**
 7. Set Clock **11025**
 8. Select the proper sound card **Device ID**
 9. To obtain the proper ID, click **Get ID** button on Router's **Audio Mixer** tab.
 10. Select COM-TxD (FSK) for the TX Port.
- If you want the option to switch between AFSK and FSK, select Sound + COM-TxD (FSK)

11. Click **USB port** button and choose **C: Limiting speed**
12. Click "OK" to return to the Misc tab.
13. Click "OK" to save the settings and return to Hamscope's main screen.

