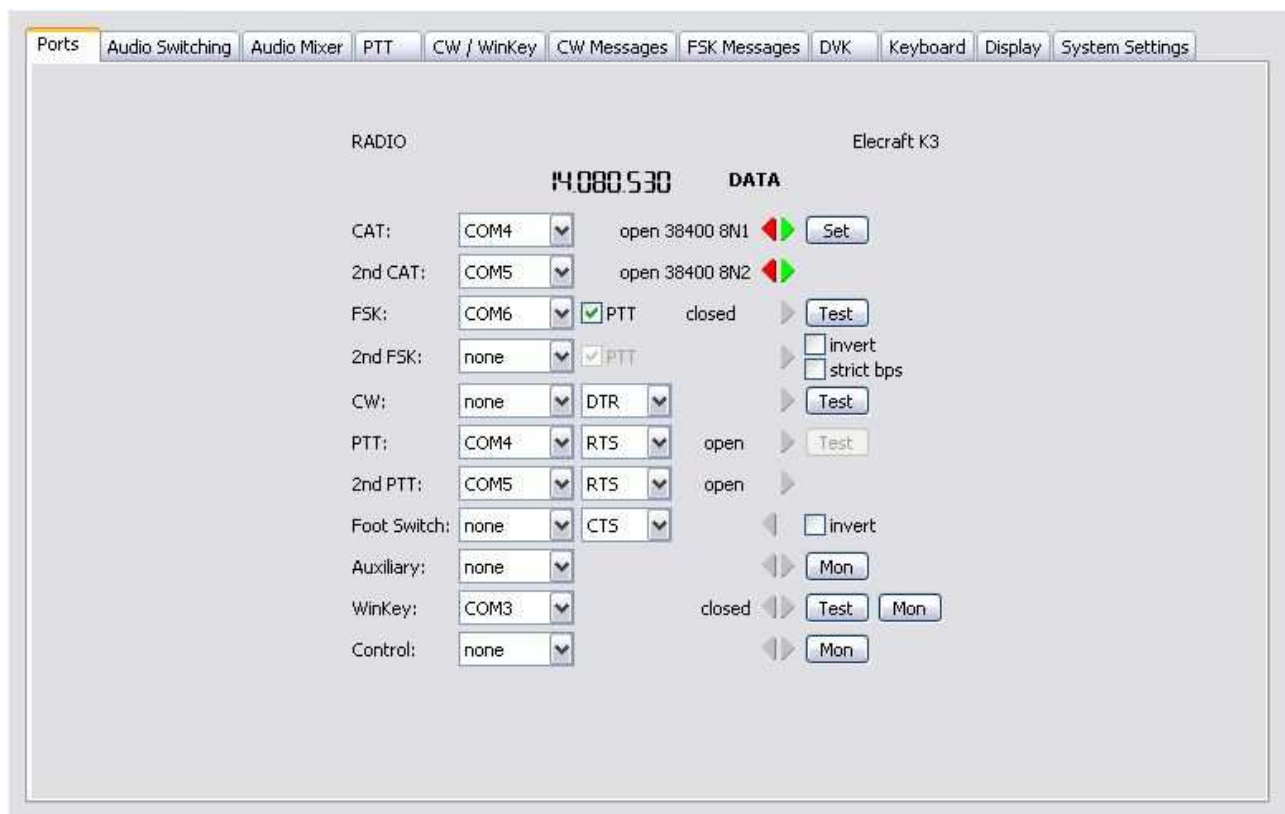


microKEYER II and FLdigi Setup

Router setup:

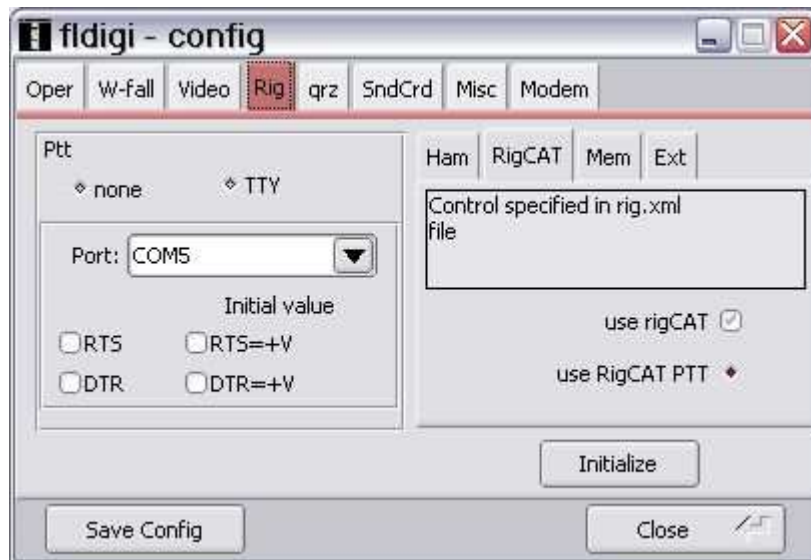
Note: The absolute port numbers do not matter. The key is consistency - the same port number must be used for a specific function every time it is used.

1. Assign a virtual port for radio control. It may be best to use the 2nd CAT port so FLdigi can run at the same time as your logging program.
2. Assign PTT to the same port as you used for radio control in FLdigi. Again, it maybe best to use the 2nd PTT port.
3. FLdigi does not support computer generated CW, WinKey or FSK. Leave those ports assigned for your logging program.



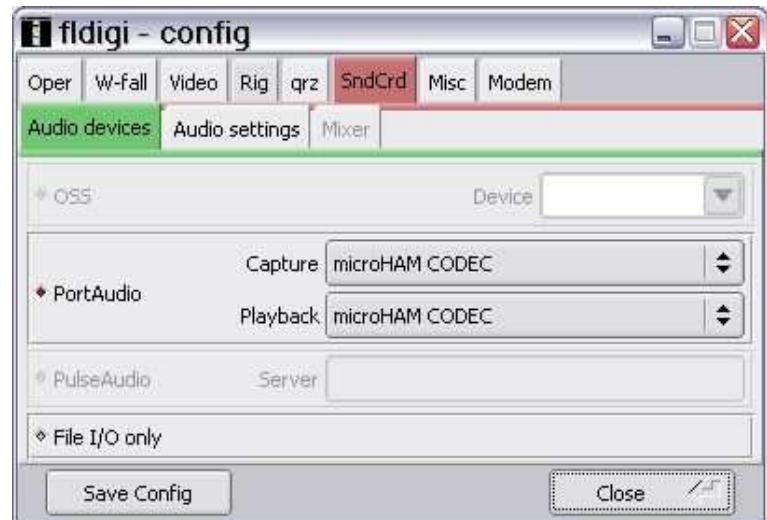
4. On the **Audio Switching** tab, make sure FSK/DIGITAL is set to "Line Input (rear)."
5. On the **PTT** tab, select **PTT1** for VOICE, **PTT1 or QSK** for CW, and **PTT2** for FSK/DIGITAL.
6. **UNCHECK** "Sound card PTT" on the PTT tab.
7. Save the settings to a preset by selecting **Preset | Save as**. Choose a position and name it FLdigi.

FLdigi setup:



1. Click **Configure | Defaults | Rig Control ...**
2. In the PTT box, check "None"
3. Select the RigCAT tab on the right, check "use rig CAT" and select "use RigCAT PTT" on the virtual port you selected for CW and PTT in Router.
4. Select Save Config
5. Select the **SndCrd** tab.

6. Select "PortAudio"
7. Set both Capture (Audio Input) and Playback (Audio Output) to "microHAM CODEC"
8. Click Save Config and Close.
9. Download the XML file (control file) for your transceiver from: w1hkj.com/xmlarchives.html
10. Edit the port section of the XML file to specify the necessary data rate, virtual port and RTS or DTR PTT. Your parameters may be different from this example:



```

<PORT>
  <BAUD>38400</BAUD>
  <DEVICE>COM5</DEVICE>
  <ECHO>>false</ECHO>                ; true for Icom
  <RETRIES>4</RETRIES>
  <TIMEOUT>200</TIMEOUT>
  <WAIT>0</WAIT>
  <DTRINIT>-12</DTRINIT>
  <DTRPTT>>false</DTRPTT>           ; true if PTT is DTR
  <RTSINIT>-12</RTSINIT>
  <RTSPTT>>true</RTSPTT>            ; false if PTT is DTR
  <RTSCTS>>false</RTSCTS>
</PORT>

```

11. Copy the modified XML file to C:\Documents and Settings\\fldigi.files\rig.xml