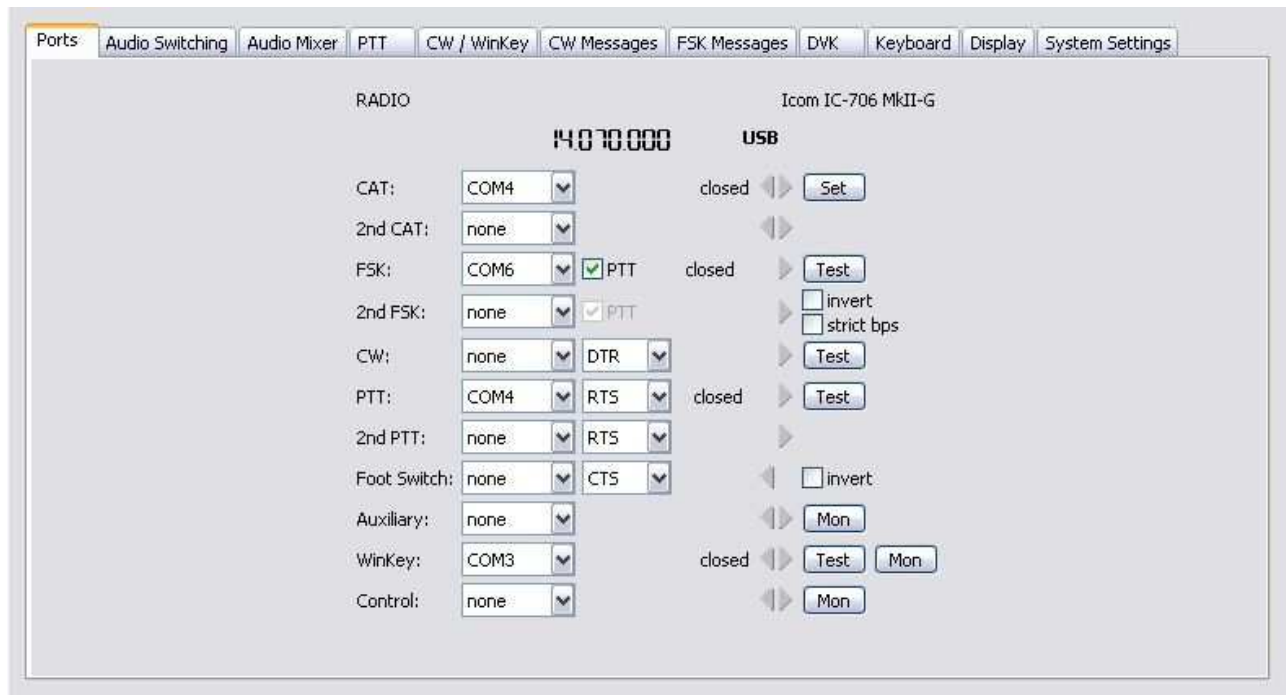


microKEYER II and CommCat setup

Router setup:

Note: The absolute port numbers do not matter. The key is consistency - the same port number must be used for a specific function every time it is used.

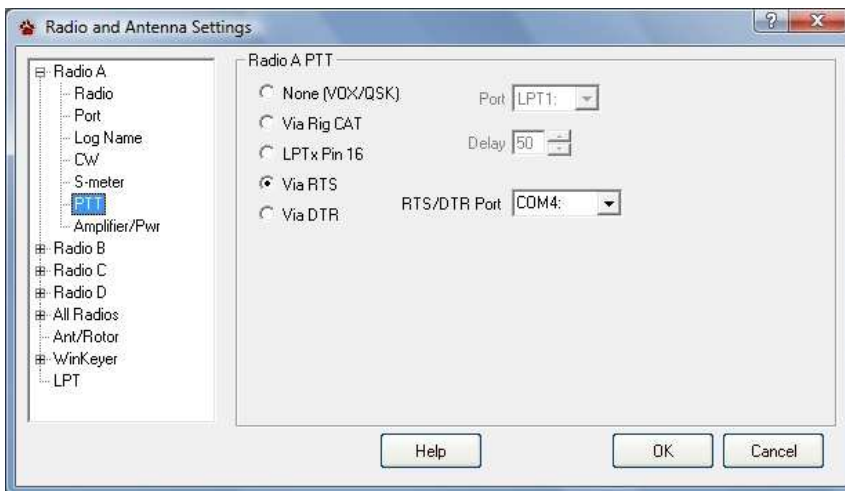
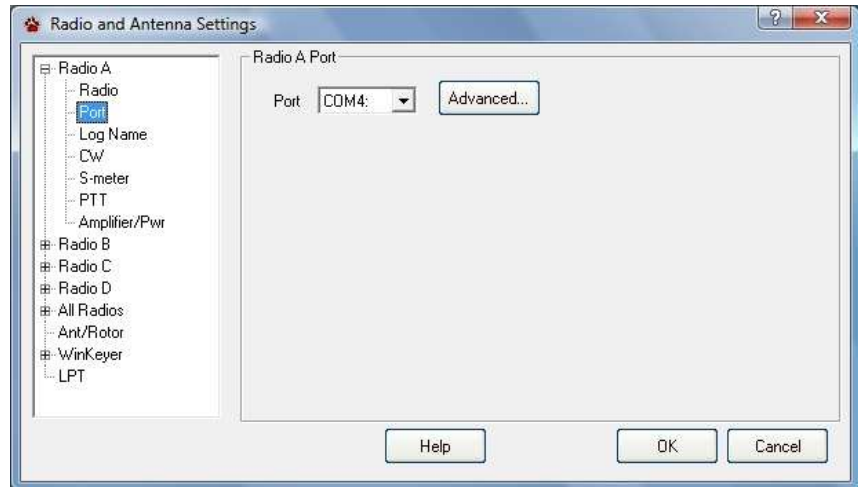
1. Assign the radio control virtual COM port.
2. Assign the same port for PTT as you assigned for Control.
3. Assign a port for WinKey.
4. Assign a port for FSK – check the PTT box.



5. Save settings to a preset by selecting menu **Preset | Save as**. Choose a position and name it CommCat.

CommCat setup:

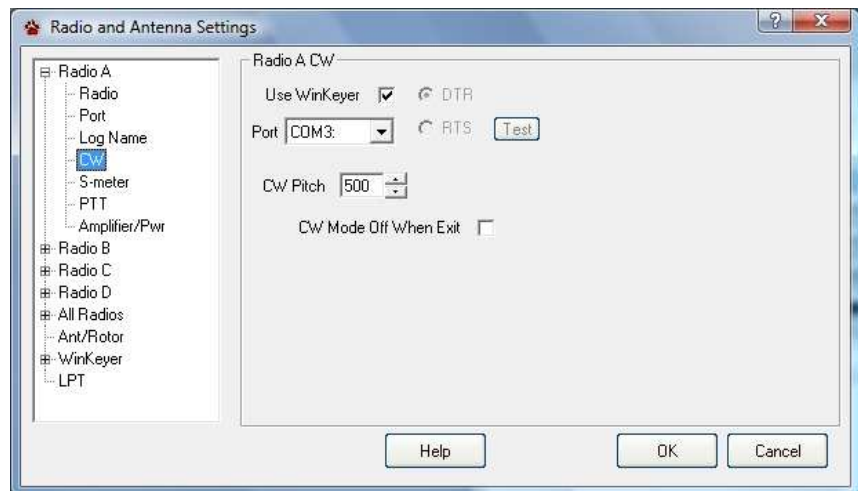
1. Click **File | Settings | Radio/Ant** and select the **Radio A | Port ...**
2. Select the same port as you set for CAT in Router.



3. Select **Radio A | PTT**
4. Check "Via RTS"
5. Set the RTS/DTR Port to the same port as you selected for CAT and PTT in Router.

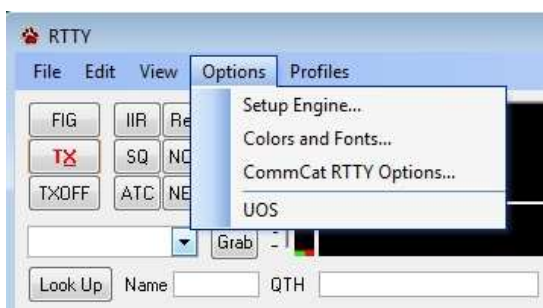
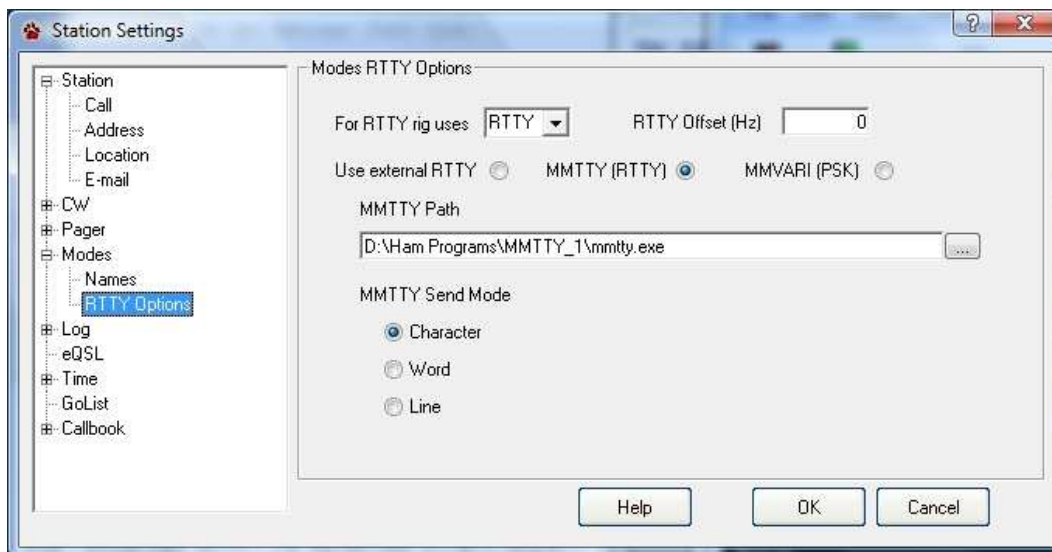
6. Select **Radio A | CW**
7. Check "Use WinKeyer"
8. Set Port to the same port you assigned for WinKey in Router

Note: WinKeyer settings are configured on the CW Tab in Router



RTTY setup:

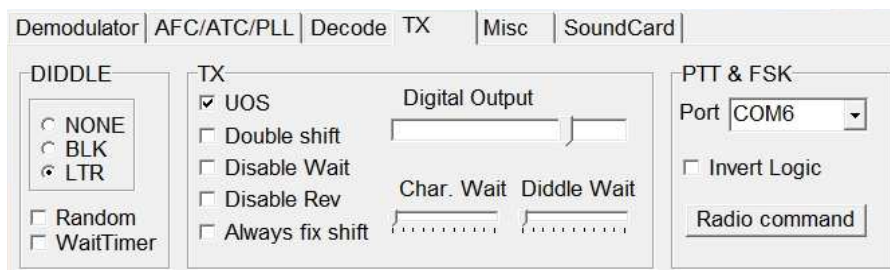
1. Click **File | Settings | Station** and select the **Modes | RTTY Options ...**



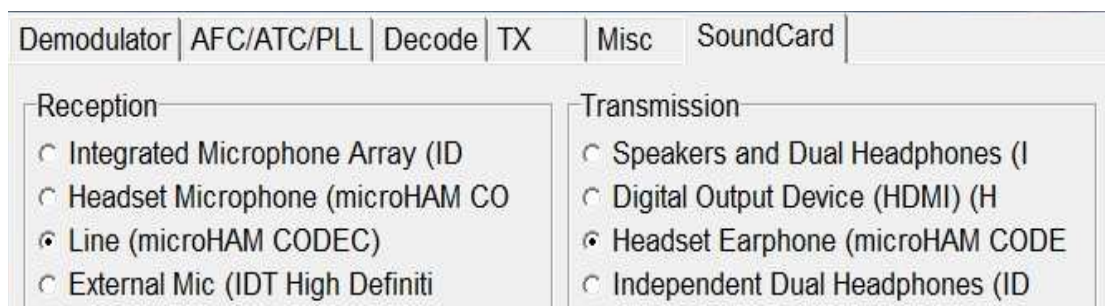
2. Click MMTTY (RTTY)
3. Set the path to MMTTY as needed.
4. Click the RTTY Icon in the Toolbar to open the RTTY Interface
5. Select **Options | Setup Engine ...**

6. Select the TX tab
7. Set PTT & FSK to the port you defined for FSK in Router.

MMTTY will use this port for FSK and PTT.



8. Select the SoundCard Tab



9. Choose Line (microHAM CODEC) for Reception
10. Chose Headset Earphone (microHAM CODEC) for Transmission.

11. Select the Misc tab.

12. Set Tx Port to "Sound" for AFSK or to "COM-TxD(FSK)" for FSK

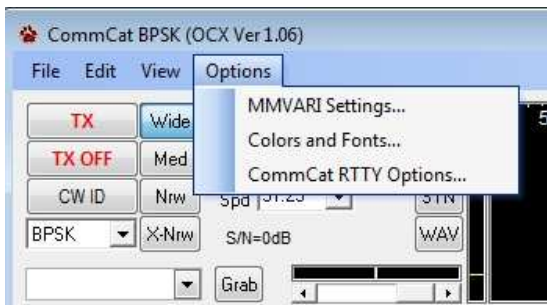
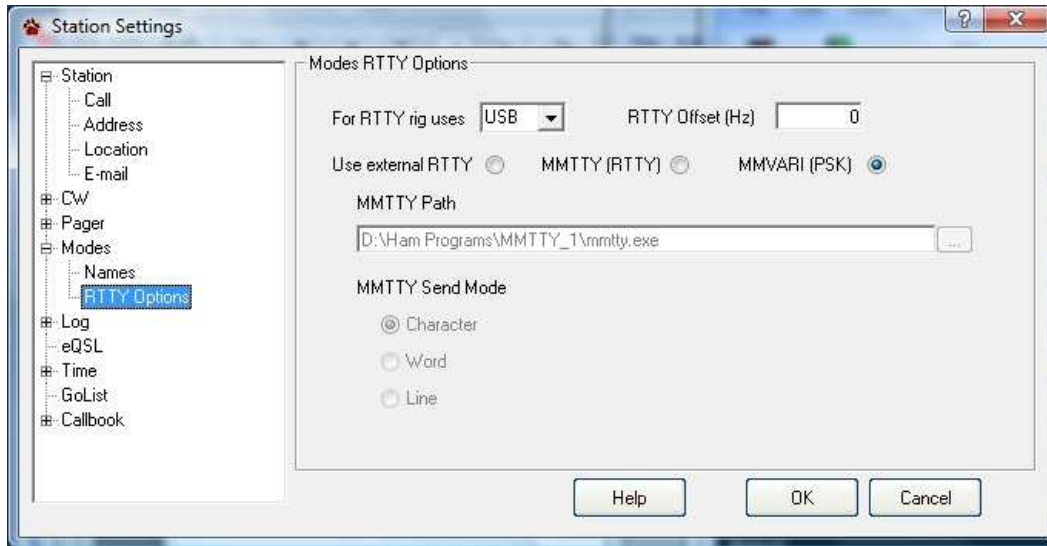
13. Select Source = "Left" (this is the Main Receive in transceivers with dual receivers)

The screenshot shows a software configuration window with several tabs: Demodulator, AFC/ATC/PLL, Decode, TX, Misc, and SoundCard. The SoundCard tab is active. The window is divided into several sections:

- Sound Card**:
 - FIFO**: RX is set to 12, TX is set to 4.
 - Priority**: Radio buttons for Normal, Highest, Higher, and Critical. "Higher" is selected.
 - Device Identifiers**: RX is set to 2, TX is set to 2.
 - Source**: Radio buttons for Mono, Right, and Left. "Left" is selected.
- Sound loopback**: Radio buttons for OFF, Int., and Ext. (SAT). "Int." is selected.
- Tx Port**: Radio buttons for Sound, Sound + COM-TxD (FSK), and COM-TxD(FSK). "Sound + COM-TxD (FSK)" is selected. A "USB Port" button is also visible.

PSK31 setup:

1. Click **File | Settings | Station** and select the **Modes | RTTY Options ...**



2. Click MMVARI (PSK) and set the Mode/Offset required by your transceiver.
3. Click the RTTY Icon in the Toolbar to open the Digital Interface.
4. Select "Options | MMVARI Settings"

5. Set Input to:
Line (microHAM CODEC)
6. Set Output to:
Headset Earphone (microHAM CODEC).

