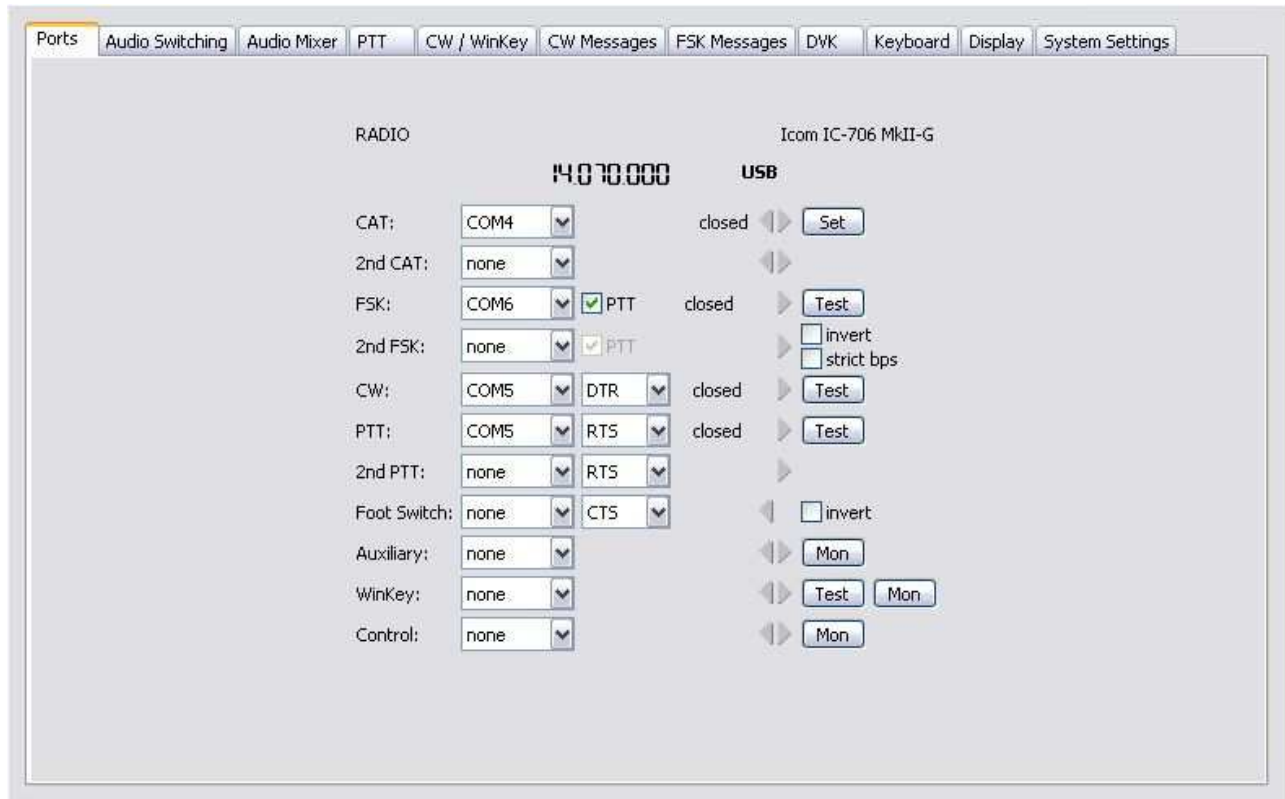


microKEYER II and CWtype Setup

Router setup:

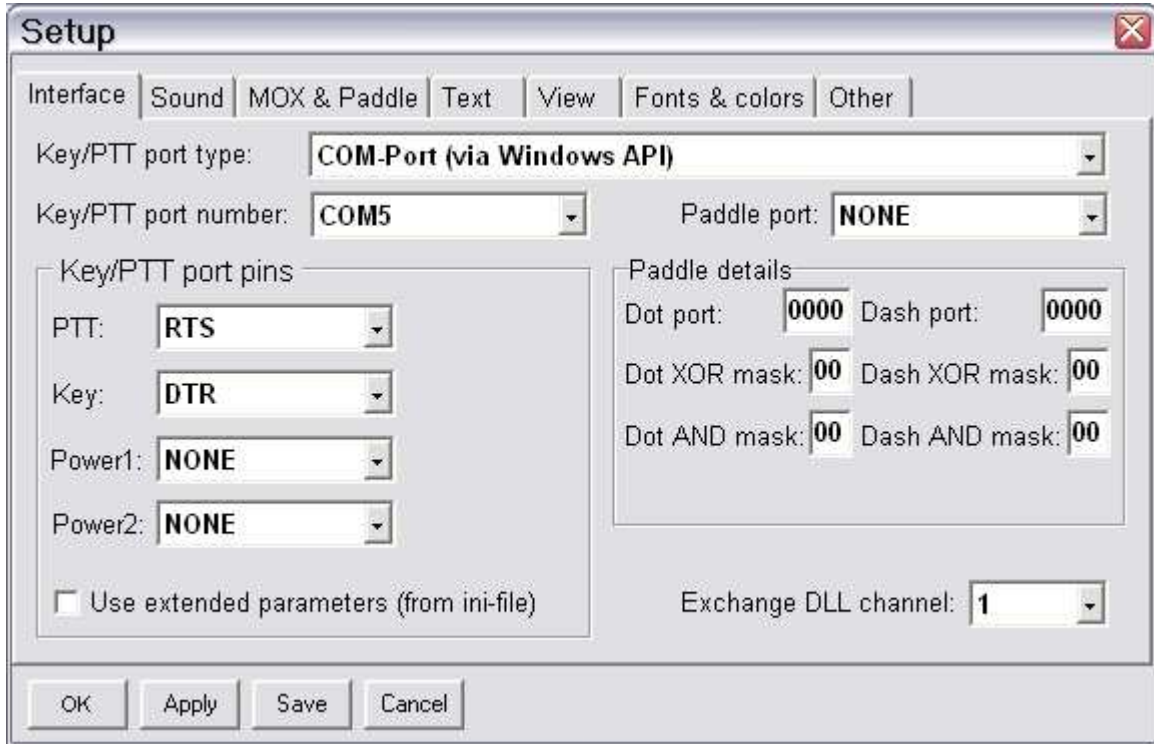
Note: The absolute port numbers do not matter. The key is consistency - the same port number must be used for a specific function every time it is used.

1. Assign the radio control virtual COM port (used by the logging program).
2. Assign a port for CW and PTT. If the logging or digital program is using PTT, use 2nd PTT.



3. On the **PTT tab** select **PTT1** for VOICE, **PTT1 or QSK** for CW and **PTT2** for FSK/DIGITAL. Check PA PTT or LNA PTT if microKEYER II will be controlling an amplifier PTT line.
4. Save settings to a preset by selecting menu **Preset | Save as**. Choose a position and name it CWtype.

CWtype setup:



1. Click **Setup | Interface**
2. Select Key/PTT port type: **COM-Port (via Windows API)**
3. Set PTT: RTS
4. Set Key: DTR (CW output)