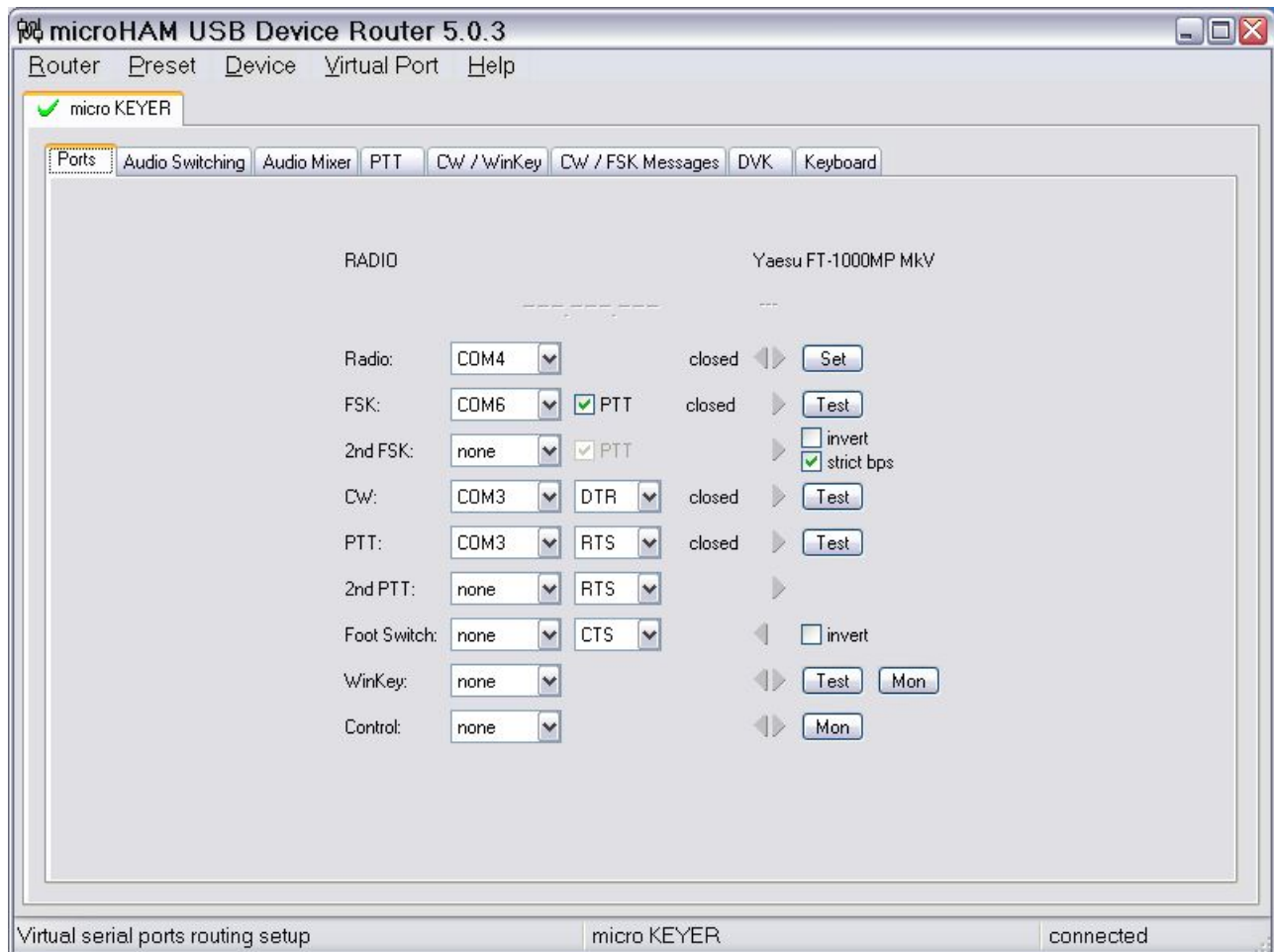


microKEYER II and WriteLog Setup without WinKey

Router setup:

Note: The absolute port numbers do not matter. The key is consistency - the same port number must be used for a specific function every time it is used.

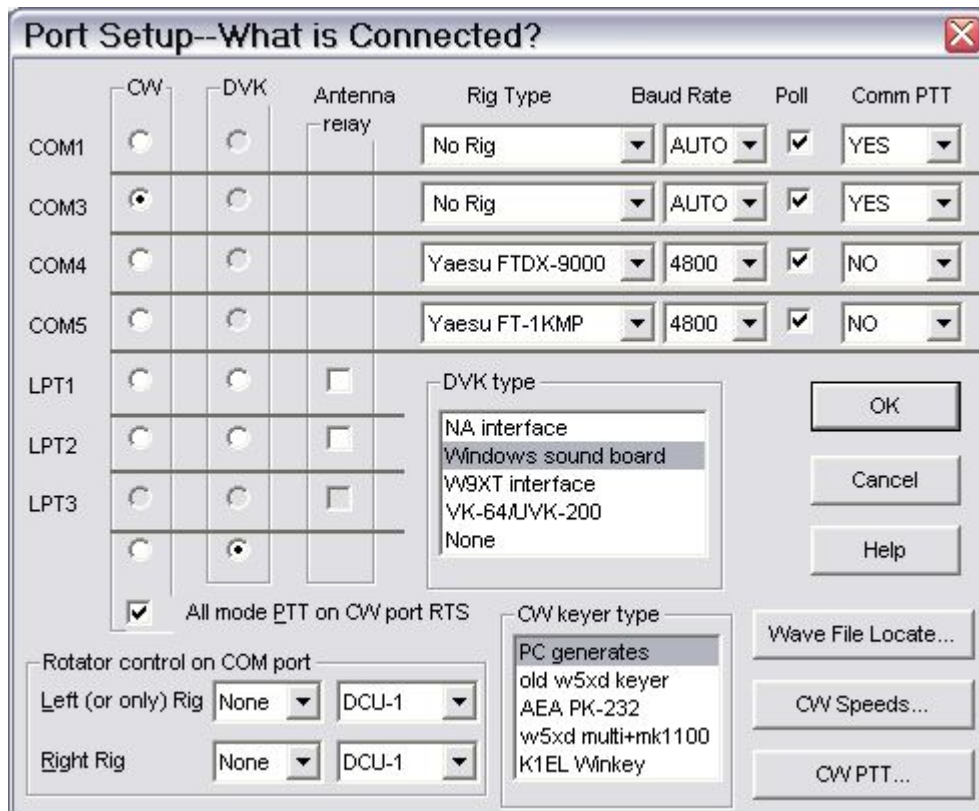
1. Assign the radio control virtual COM ports. Click the **Set** button and select your radio from the drop down box. Uncheck the **Disable router queries** box.
2. Assign the same port for CW and PTT
3. Assign a port for FSK – check PTT and “strict bps”. If you are not using WriteLog for RTTY contesting you can skip this step.



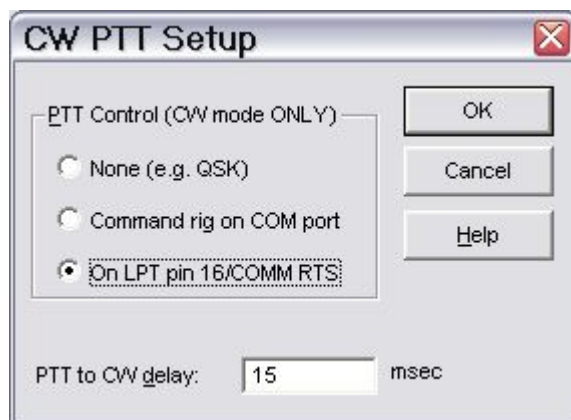
4. On the **Audio Switching** tab. Set VOICE to “Microphone jack, logger or DVK control.” Set FSK/DIGITAL to “Line input (rear).”
5. On the **PTT** tab, select **PTT1** for VOICE, **PTT1 or QSK** for CW and **PTT2** for FSK/DIGITAL.
6. Save settings to a preset by selecting menu **Preset | Save as**. Choose a position and name it WriteLog.

WriteLog setup:

1. Click **Setup| Ports ...**



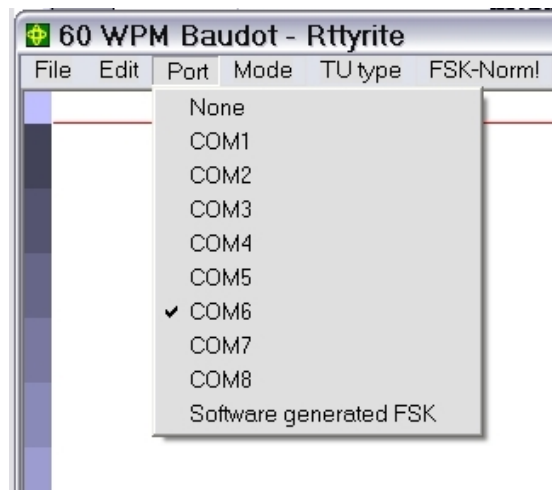
2. Select "PC Generates" as the CW keyer type
3. Assign CW to the port you used in Router's Ports tab
4. Select the proper Rig Type and the Port you used for Control in Router's Ports tab.
Be sure to set Comm PTT to OFF – WriteLog should not operate PTT by CAT command.



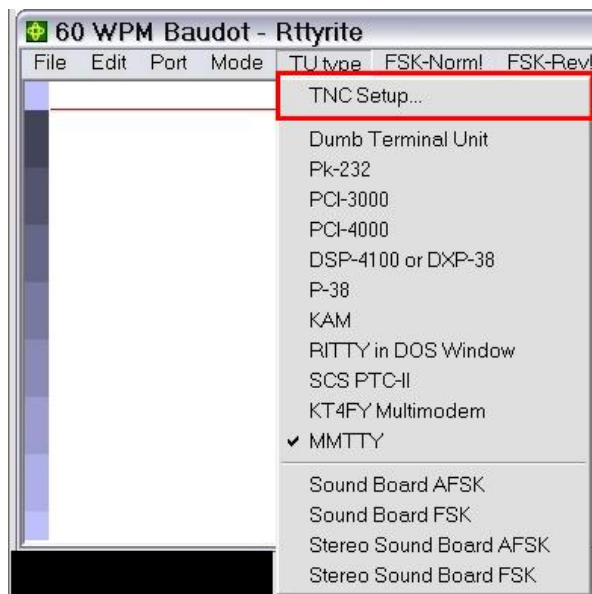
5. Select "All mode PTT on CW Port RTS"
6. Click CW PTT. Select PTT or QSK and set the PTT to CW delay.

RTTY/Digital setup:

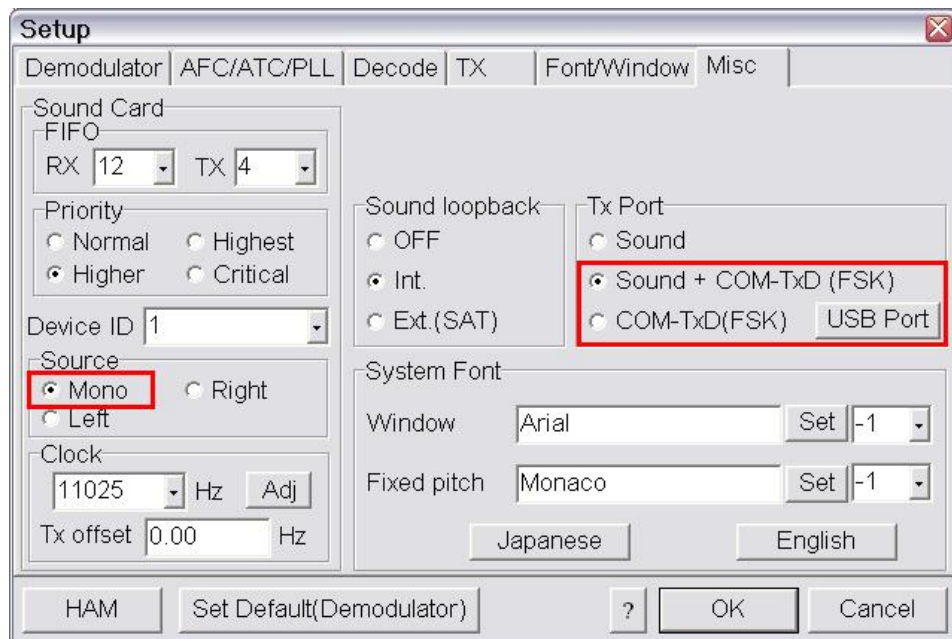
FSK operation with *microKEYER* and WriteLog requires the MMTTY plug-in for WriteLog.



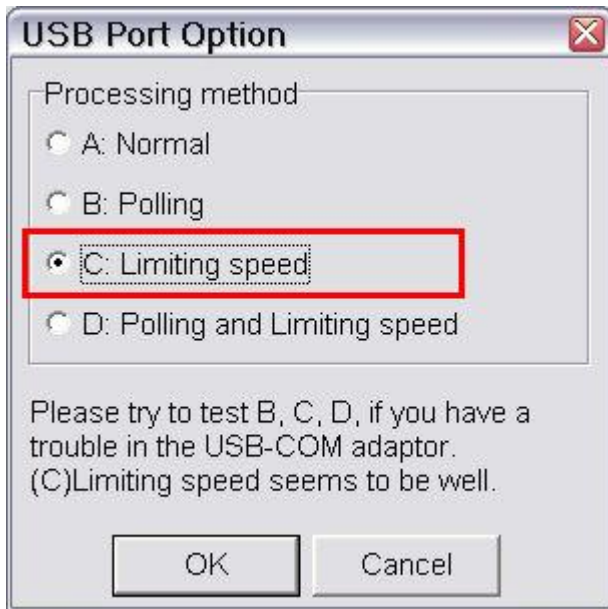
1. Install and configure the MMTTY Plug-in for WriteLog.
2. Open the WriteLog RTTY Window and select the same port as you assigned for FSK in Router.



3. Select MMTTY as the TU Type and click on TNC Setup | MMTTY Settings to configure MMTTY.



4. Choose the Misc Tab.
5. Select **Source Mono**
6. Select clock **11025**
7. Select proper Sound card **Device ID** number.
To obtain the proper ID, click **Get ID** button at the Router **Audio Mixer** tab.
8. Select COM-TxD (FSK) for the TX Port. If you want the option to switch between AFSK and FSK, select Sound + COM-TxD (FSK)



9. Click **USB port** button and choose **C: Limiting speed**