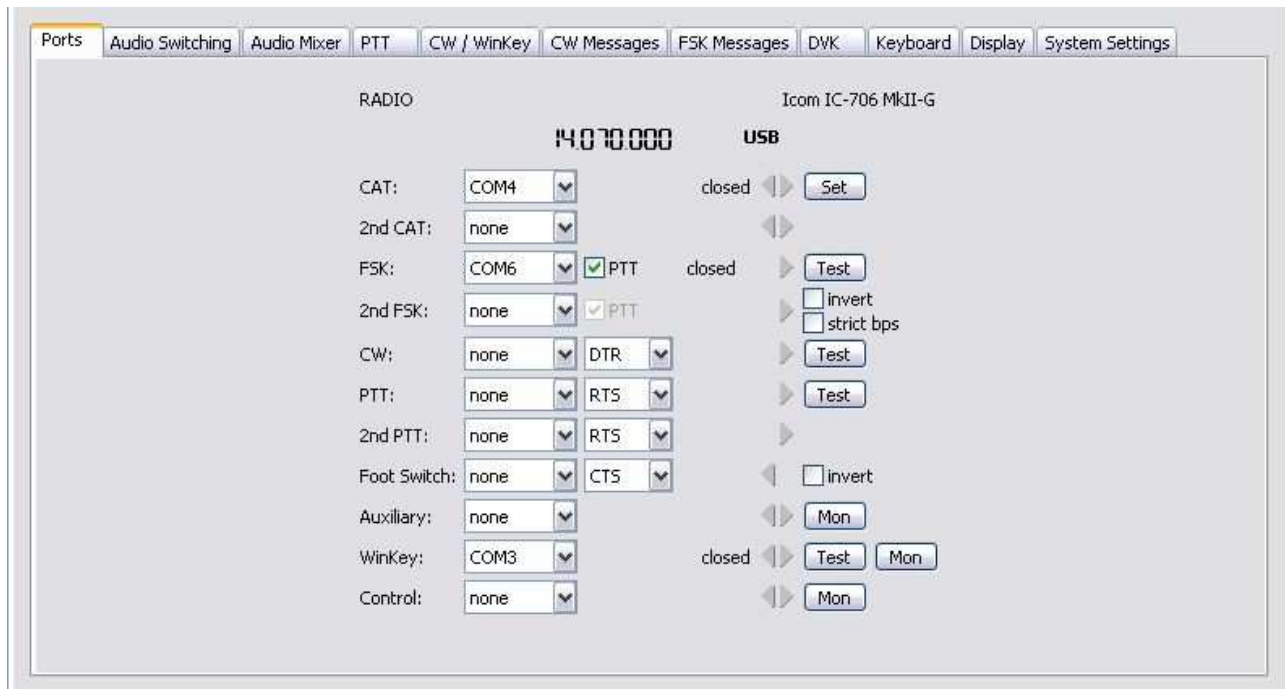


# microKEYER II and Win-EQF Setup

## Router setup:

Note: The absolute port numbers do not matter. The key is consistency - the same port number must be used for a specific function every time it is used.

1. Assign the radio control virtual COM port. Click Set and select your radio from the drop down box. Uncheck "Disable router queries."
2. Assign a port for WinKey
3. CW and PTT ports should not be assigned
4. Assign a port for FSK if you intend to use MMTTY at the same time as Win-EQF



5. Save the settings to a preset by selecting **Preset | Save as**. Choose a position and name it Win-EQF.

## Win-EQF setup:

1. Click **Setup | Station #1 Rig ->**

Model: FT-2000
COM Port: 4
BAUD: 4800
DATA Bits: 8
STOP Bits: 2
Parity: None
XVTR Offset: 0 (MHz)
DTR Handshake: OFF
RTS Handshake: OFF

2. Set your radio
3. Select the virtual COM port you used for Control in Router's Ports tab
4. Set BAUD, Data Bits, Stop Bits and Parity required by your radio.
5. Set DTR and RTS handshake OFF.

6. Click **Setup | Station #1 CW Keyer ->**

7. Select [**keyer choices...**]

WinKey	[keyer choices...]
COM Port: 3	
<input checked="" type="checkbox"/> Use Win-EQF defaults	



Pick a CW KEYSER for STATION #1

- NONE
- Built-In Keyer
- WinKey

OK Cancel

8. Select WinKey as the CW Keyer
9. Set the virtual port you chose for WinKey on Router's Ports tab for the External Keyer.