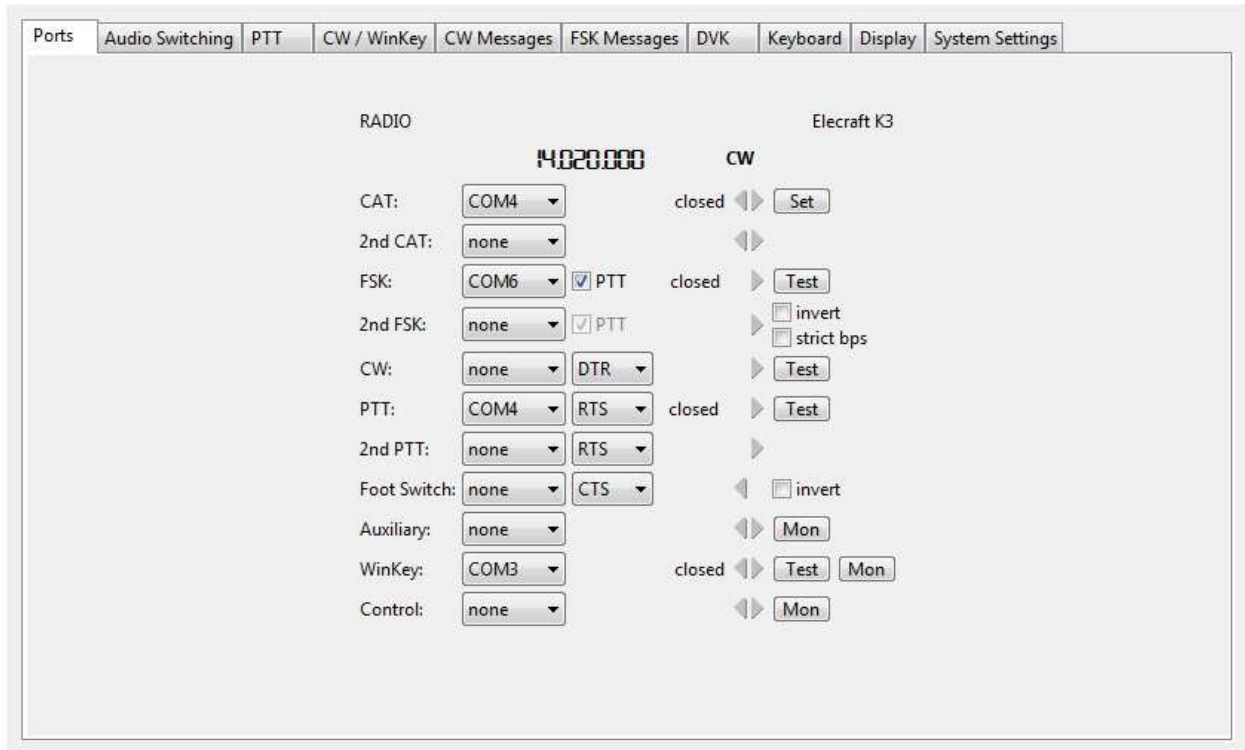


microKEYER II and Logic setup

Router setup:

Note: The absolute port numbers do not matter. The key is consistency - the same port number must be used for a specific function every time it is used.

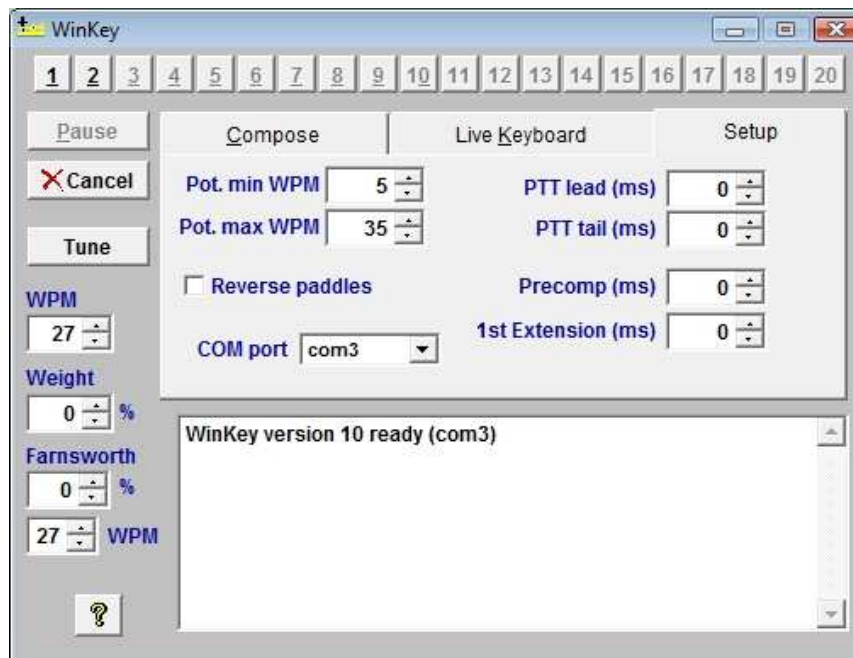
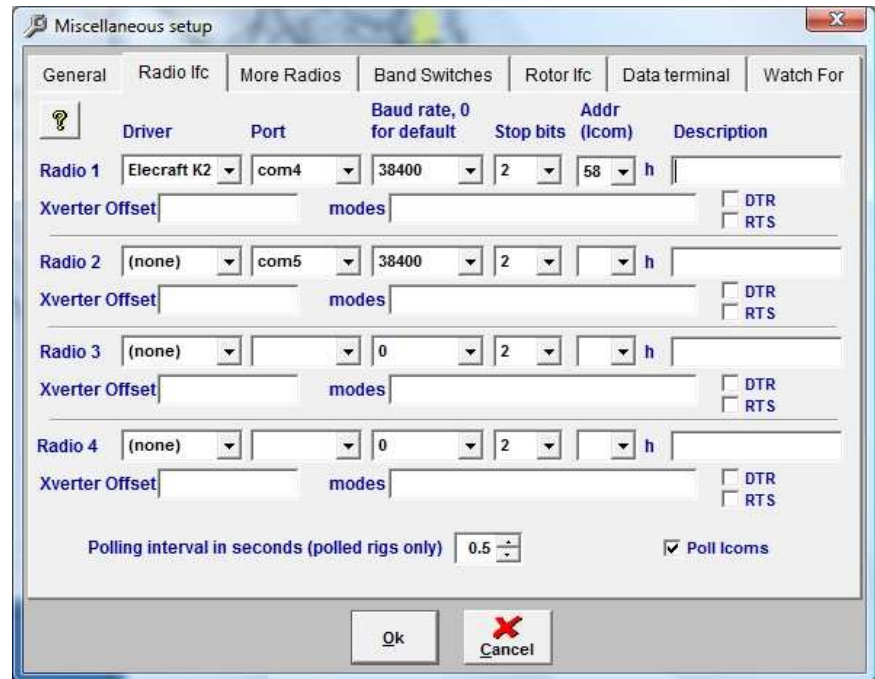
1. Assign the radio control virtual COM port.
2. Assign a port for WinKey.
3. Assign the same port for PTT as you assigned for CAT.



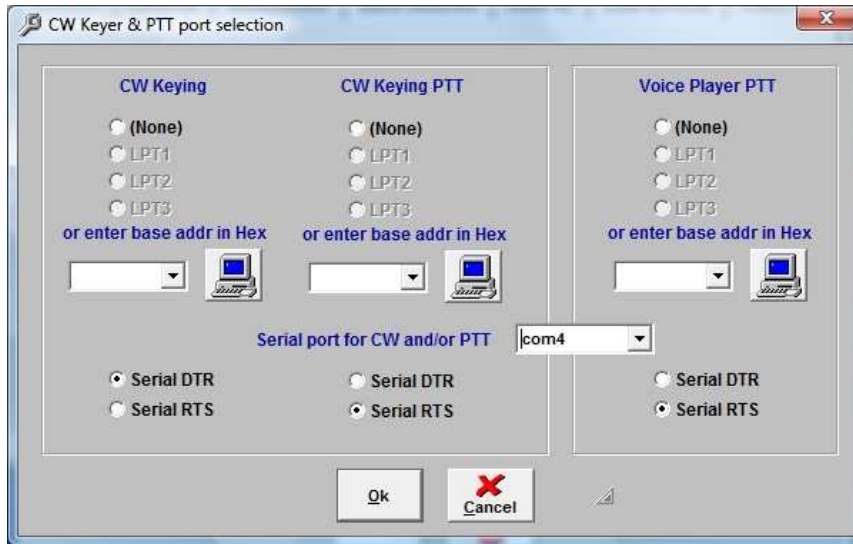
4. Save the settings to a preset by selecting **Preset | Save as**. Choose a position and name it LOGic.

LOGic setup:

1. Click **Tools | Setup | Misc ham setup, rig, TNC ...**
2. Select the Radio Ifc tab.
3. Select your Rig
4. Select the Port you assigned for Control in Router
5. Set the Baud Rate, Stop Bits and other settings required by your radio.
6. Click OK to save your settings



7. Click **Forms | WinKeyer** to open the WinKey Keyer Window.
 8. Select the **Setup** tab to configure the keyer.
 9. Set the COM port to the port you assigned for WinKey in Router.
- Note:** the other settings – lead, tail, min/max WPM, etc. are set on the CW/WinKey tab in Router.
10. Router will override any settings in LOGic.
 11. Click OK to save your settings



12. Click **Tools | Setup | Misc ham setup, rig, TNC ...**

13. Select the **General** tab and click the **Select Port** button under Voice Keyer Push-to-Talk.

14. Set "Serial port for CW and/or PTT" to the port you selected for CW and PTT in Router.

Note: At the present time, DVK (Voice Player) operation requires that "Headset Earphone - microHAM CODEC" be the system default playback

device. This is dangerous as Windows System Sounds can autonomously cause the rig to begin transmitting. microHAM recommends that the Logic Voice Player not be used with *microKEYER II* until this limitation is resolved.



TIP: Although Logic provides links to Hamscope, MixW and hardware TNCs, it does not have built in support for RTTY and/or PSK31 using the sound card. Even so, you can use Router's 2nd CAT, 2nd PTT and FSK ports as needed to run many of the excellent free digital programs like MMTTY, MMVARI, Hamscope, DigiPan, etc. at the same time as Logic.