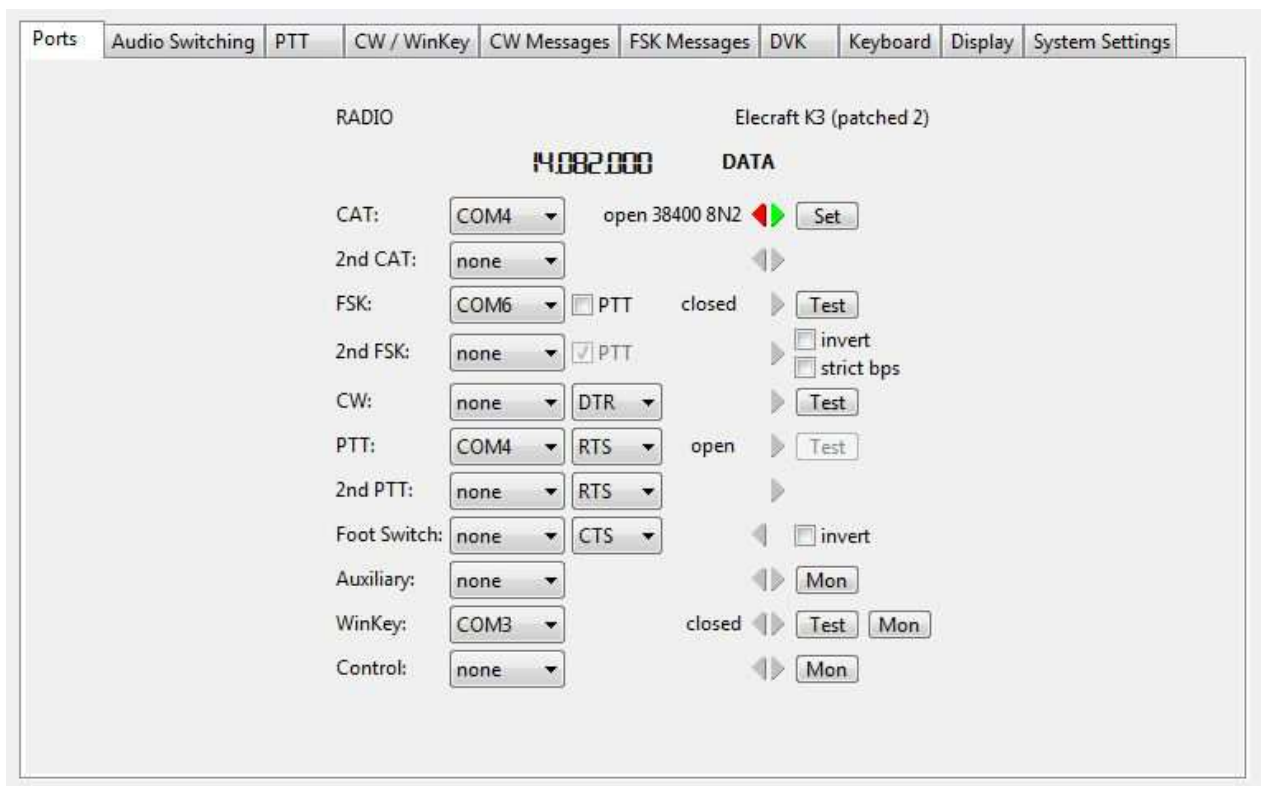


microKEYER II and Ham Radio Deluxe 6 with DM780

Router setup:

Note: The specific port numbers do not matter. The key is consistency - the same port number must be used for each function every time it is used.

1. Assign the radio control virtual COM port.
2. Assign RTS for PTT on the same port as CAT. This will be used for PTT by HRD.
3. Assign a port for WinKey.
4. If you intend to use the RTTY-45-FSK capability of HRD 6, select a FSK port and **clear** the PTT box.



5. On the PTT tab set PTT output and modes as appropriate for your station and operation.
6. Save settings to a preset by selecting menu **Preset | Save as**. Choose a position and name it HRD/DM780.

Ham Radio Deluxe setup:

Company: Elecraft
Radio: K3
COM Port: COM4
Speed: 38400
GV Add: 58

Flow control / Interface power
 CTS DTR RTS

1. Select your transceiver manufacturer and model.
2. Select the virtual port you set for CAT in Router.
3. Set the data rate for your transceiver's CAT connection.
4. Click "Connect"
5. Select "Options | COM Port TX"

6. Set COM Port Pin to RTS
7. Check "Always use RTS instead of sending CAT commands"

COM Port TX Configuration

Some early radios do not support switching TX/RX via CAT commands, so the only option is to use a pin on the CAT control COM port (this requires a special CAT cable).

Radios

- IC-706
- IC-706MkIIIG
- IC-707
- IC-718
- IC-725
- IC-735
- IC-736
- IC-738
- IC-751A
- IC-756
- IC-765
- IC-775DSP
- IC-781
- IC-821H

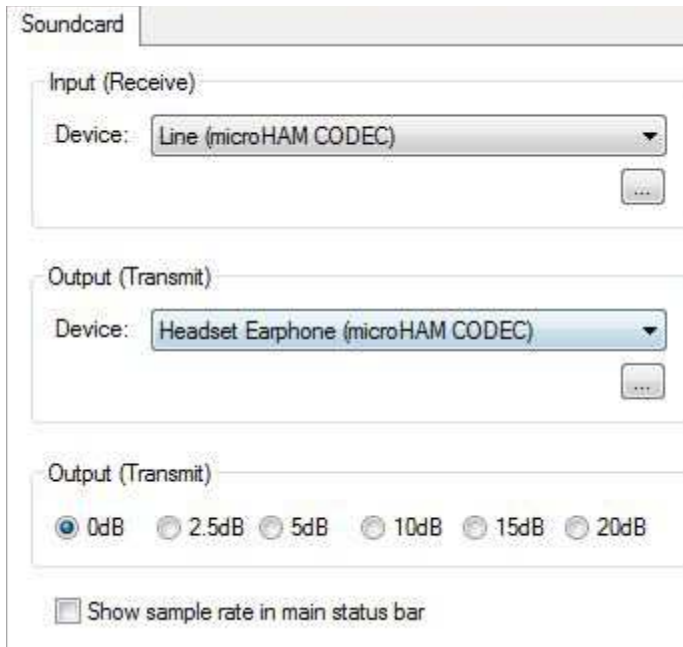
COM Port Pin

- None
- RTS
- DTR
- DTR + RTS

West Mountain Radio: RIGblaster

- Always use RTS instead of sending CAT commands

DM 780 setup:

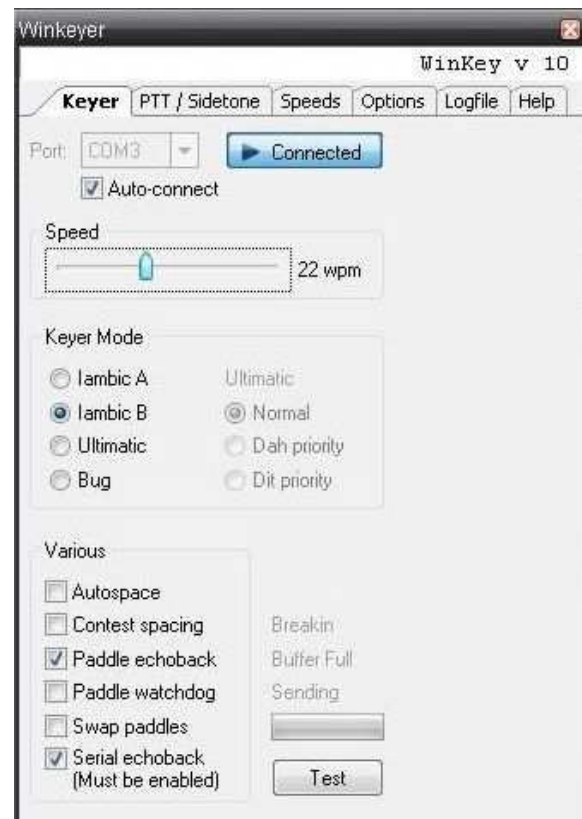


1. Start DM780
2. Select Soundcard | Options
3. Set the Input (Receive) device to "Line (microHAM CODEC)"
4. Set the Output (Transmit) device "Headset Earphone (microHAM CODEC)"
5. Set the Output (Transmit) level to 0 dB.

6. Select "CW (WinKey)" mode
7. Set the port you selected for WinKey in Router and click "Connect"

Note: The Keyer Mode and miscellaneous settings - including those settings on the Options and PTT/Sidetone tabs – are controlled by the settings in Router's CW/WinKey and PTT tabs. Choose your miscellaneous settings in Router.

8. Select an Operating Mode **other than** RTTY-45-FSK



9. Select "Program Options" then "PTT"

10. Choose "via Ham Radio Deluxe"

RTTY

5-bit RTTY does not support all characters on your keyboard. If an unsupported character is entered:

Beep

Send: ?

FSK Keying

Enable

Port: COM6


TX RTS DTR

Microham Device or Hardware Serial Port (Non-USB) Installed

Ham Radio Deluxe

via Ham Radio Deluxe - DM780 must be connected to HRD.

Configure HRD connection

 See notes below

11. Select "Modes + IDs"

12. Click the "RTTY" tab

13. Check the enable box

14. Set Port to the port you defined for FSK in Router

15. Select TX (FSK on the TxD pin)

16. Check the "Microham Device or Hardware Serial Port box".

NOTE: Always select an operating mode **other than** RTTY-45-FSK whenever you change FSK Keying parameters.

Since the FSK (RTTY) is LSB in most transceivers, be sure to engage "Reverse" in DM-780 when selecting RTTY-45-FSK.