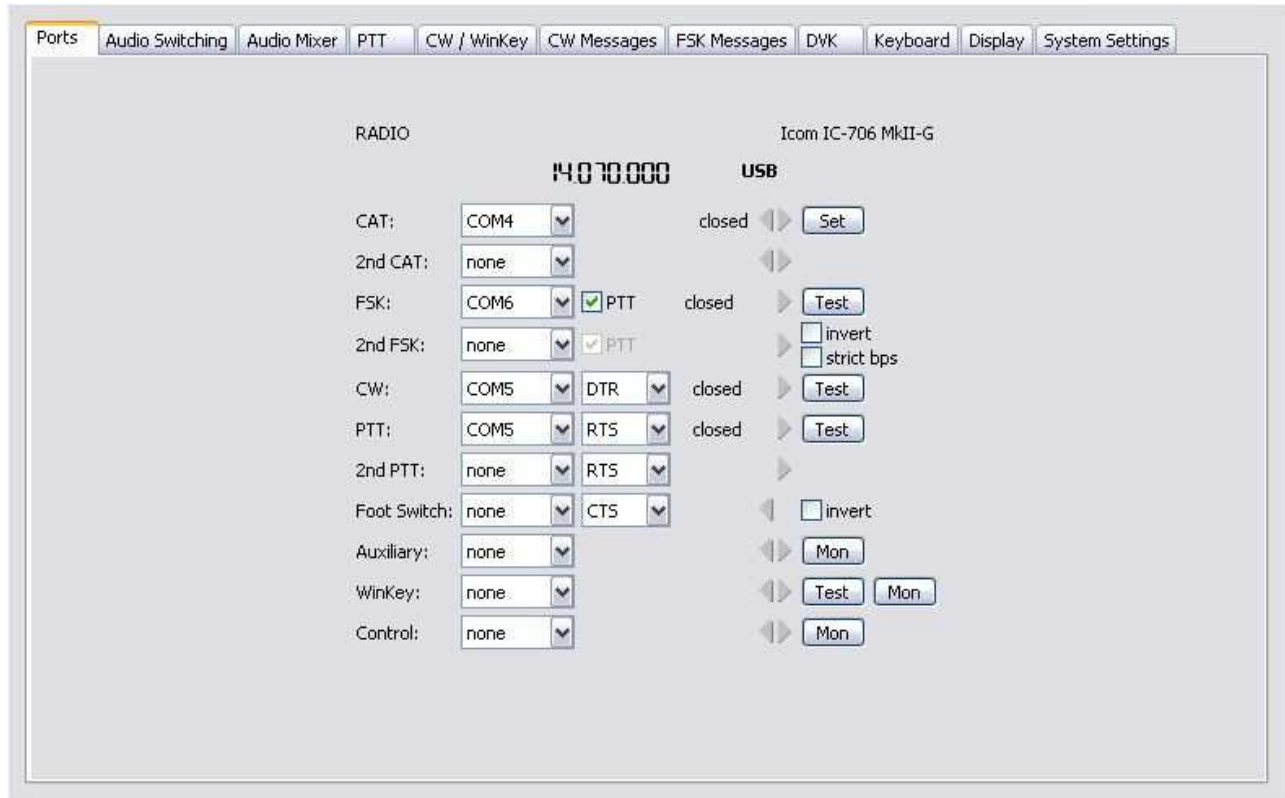


# microKeyer II and DigiPan Setup

## **Router setup:**

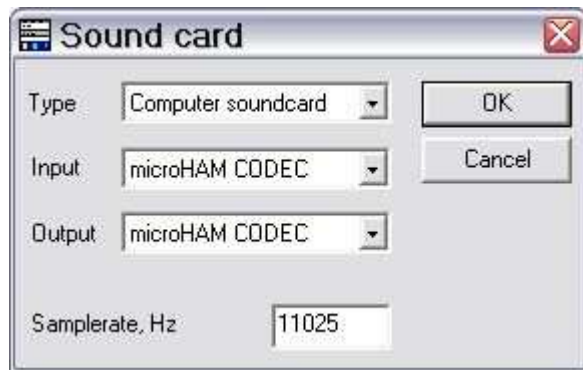
Note: The absolute port numbers do not matter. The key is consistency - the same port number must be used for a specific function every time it is used.

1. Assign a port for PTT – DigiPan provides no support for radio control, FSK or CW



2. On the **PTT** tab, select **PTT1** for voice, **PTT1 or QSK** for CW, and **PTT2** for FSK/DIGITAL.
3. Save settings to a preset by selecting menu **Preset | Save as**. Choose a position and name it DigiPan.

## DigiPan setup:



1. Click **Configure | Sound card ...**
2. Set Type to Computer soundcard
3. Select "microHAM CODEC" for input
4. Select "microHAM CODEC" for output
5. Set the Sample rate.

6. Click **Configure | Serial Port ...**
7. Select the serial port you chose for PTT on Router's Ports tab.
8. Select the control line you chose for PTT on Router's Ports tab.  
Note: Do not check "Use Icom CI-V"
9. Click "OK"

