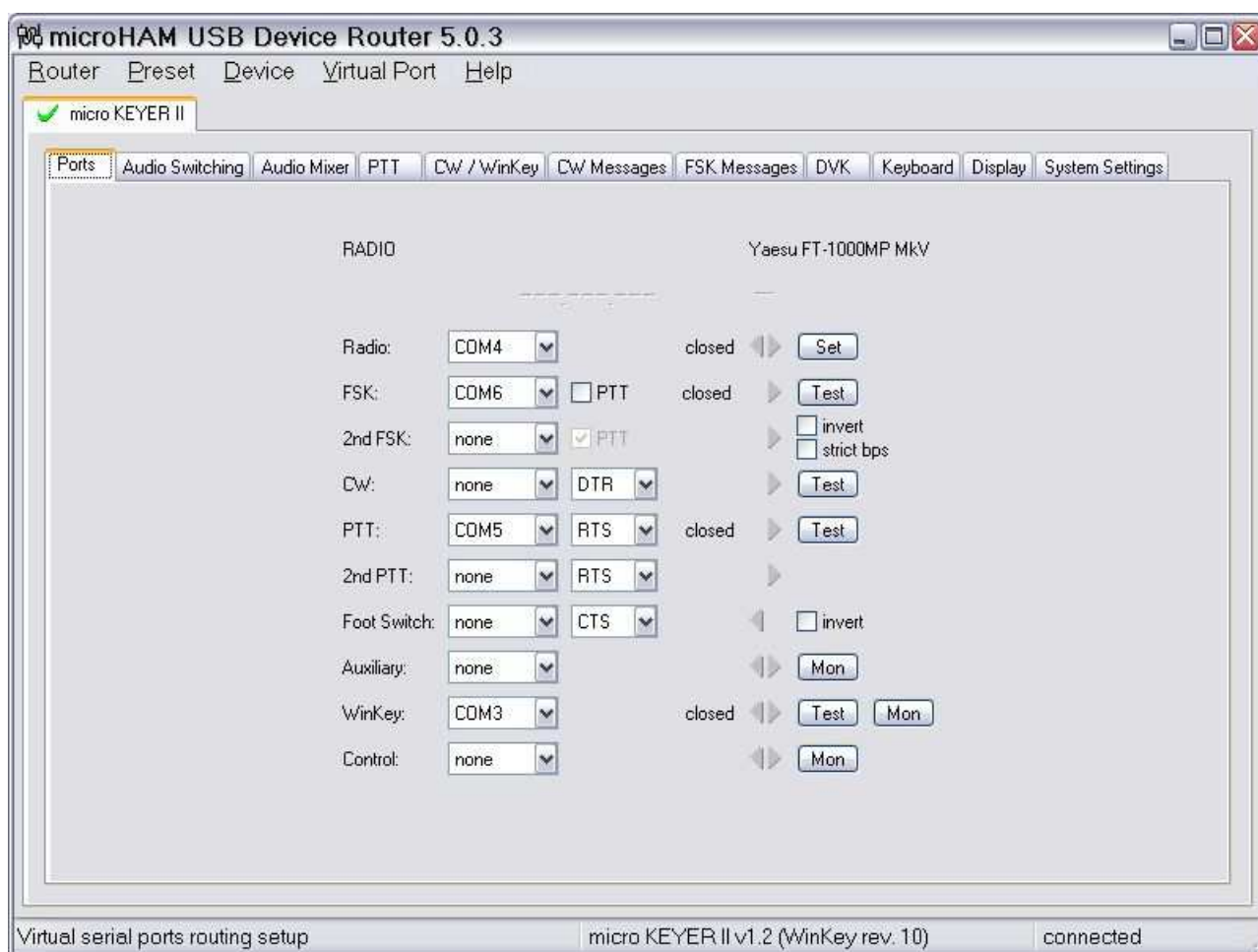


microKEYER II and DXBase 2007 Setup

Router setup:

Note: The absolute port numbers do not matter. The key is consistency - the same port number must be used for a specific function every time it is used.

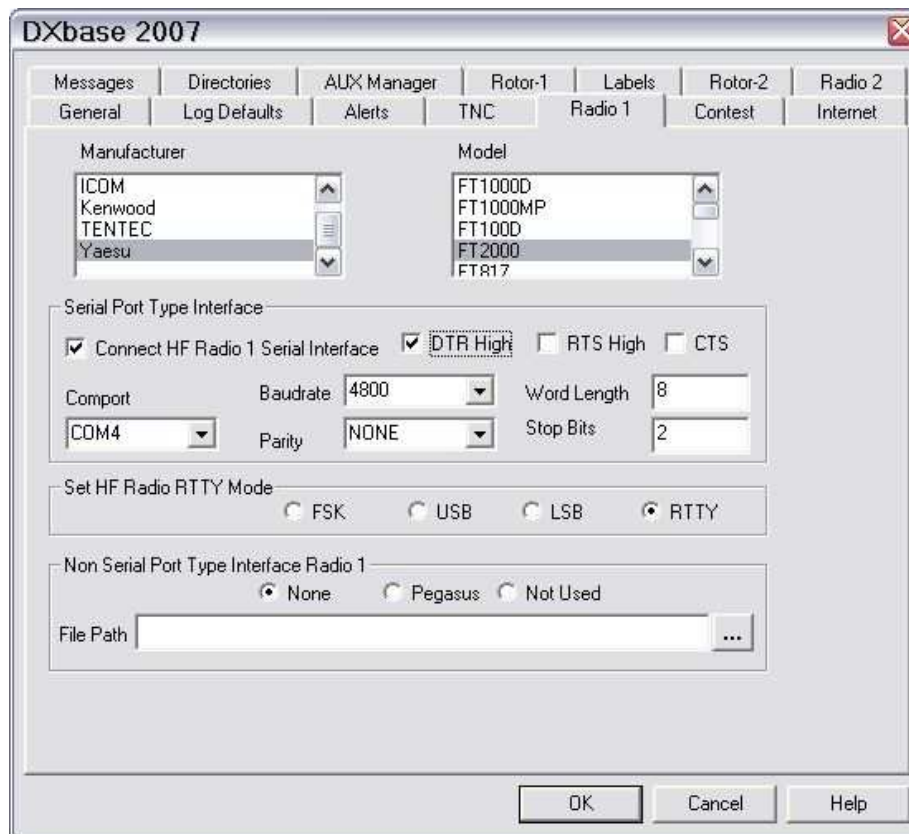
1. Assign the radio control virtual COM port. Click the **Set** button and select the radio from the drop down box. Uncheck the **Disable router queries** box.
2. Assign a port for WinKey
3. Assign a port for PTT if you use external DVK software.
4. If you plan to use MMTY or HamScope for digital mode operation, assign a port for FSK and check the PTT box. If you do not use digital modes, you can skip this step.



5. On the **PTT** tab set **PTT1** for Voice, **PTT1 or QSK** for CW, and **PTT2** for FSK/DIGITAL.
6. Save the settings to a preset by selecting **Preset | Save as**. Choose a position and name it DXBase.

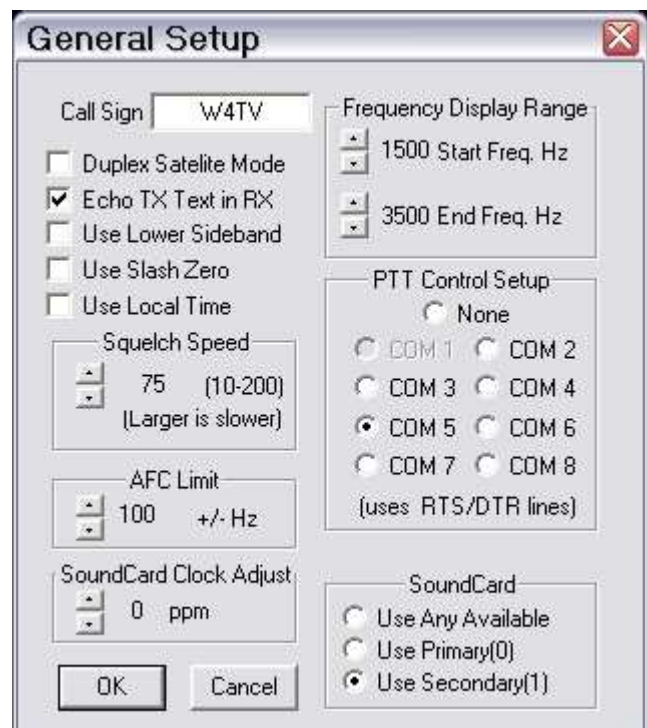
DXBase 2007 setup:

1. Click **Tools | Options | User Options** to open DXBase configuration notebook ...



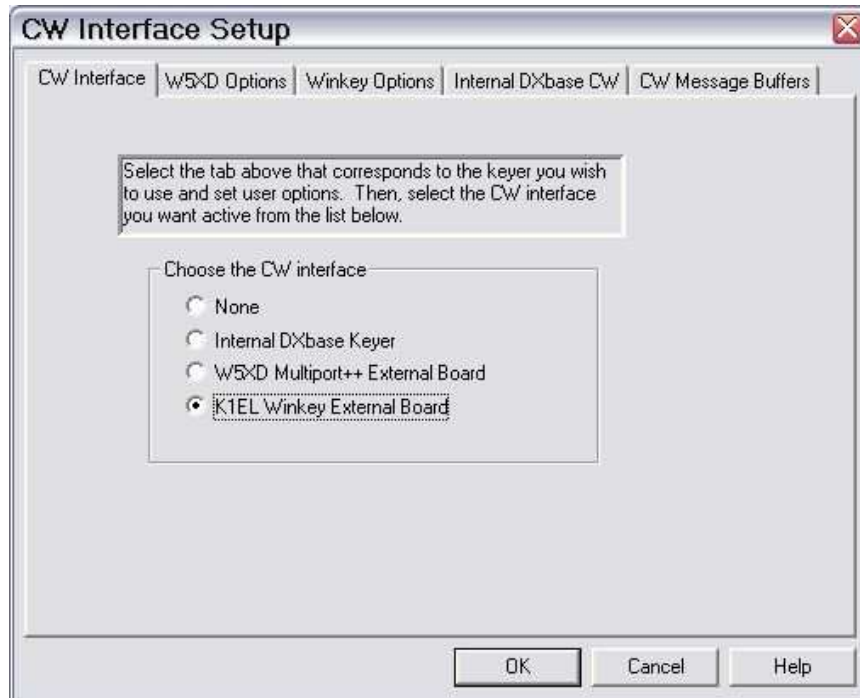
2. Select the Radio page and assign your radio to the virtual COM port you used in Router's Ports tab
3. Set the Baudrate, Word Length, Parity and Stop Bits settings required by your radio.
4. Click OK to save your settings

5. Open DXBPSK and click on **Settings | General Setup.**
6. In PTT Control Setup, select the virtual port you set for PTT on Router's Ports Tab.
7. Select the Secondary sound card if you have more than one sound device in your system.
8. Click OK to save your settings.



CW/WinKey setup:

The Internal DXBase Keyer will not work with microKEYER. You must use WinKey.



9. Click **Tools | Options | CW Keyer**

10. Select **K1EL Winkey External Board**.

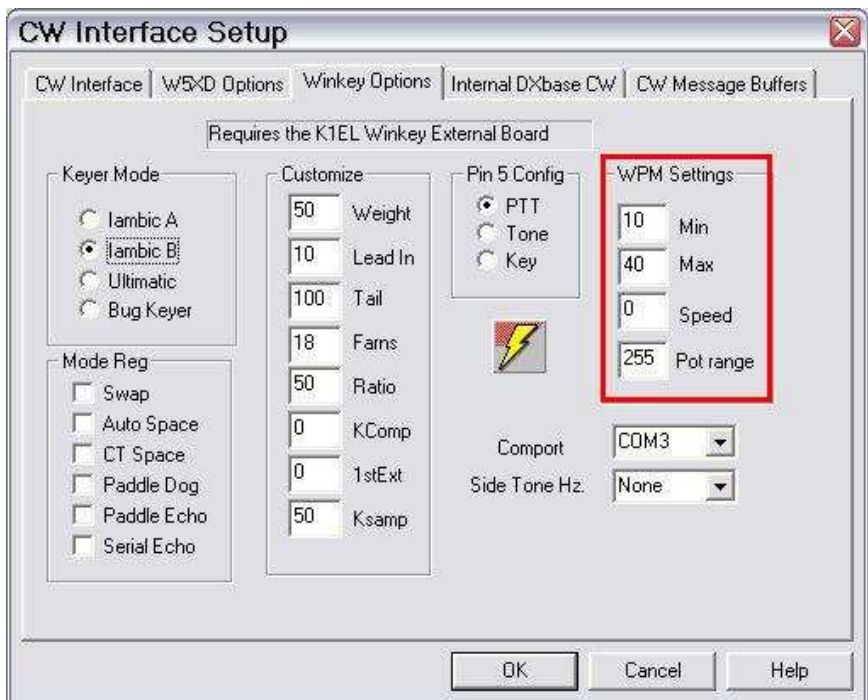
11. Select the Winkey Options tab.

12. If you want to control CW speed using the Speed control on the *microKEYER* front panel, set Speed = 0 and Pot range = 255.

13. Set Comport to the virtual port you selected for WinKey on Router's Ports Tab.

14. Select PTT for Pin 5. Router's PTT tab settings will override PTT the PTT setting if you operate QSK.

15. Click OK to save your settings.



Note: It is generally most convenient to make the CW parameters the same as those set on Router's CW/WinKey tab.