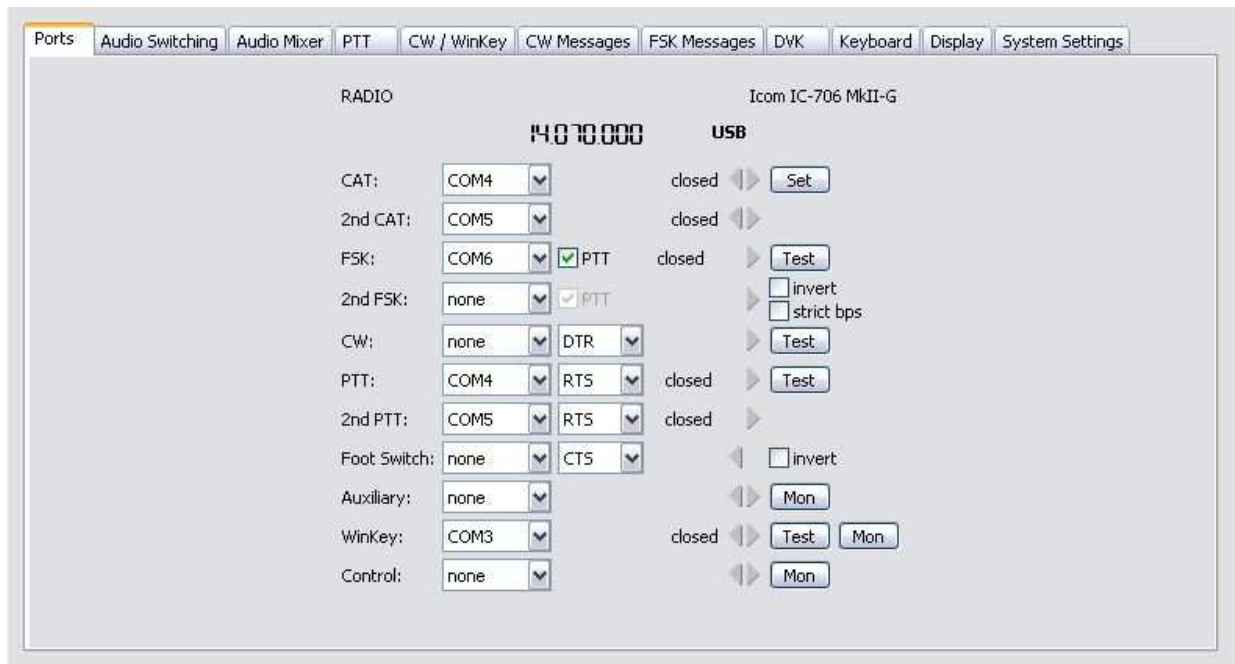


# microKeyer II and ACLog setup

## Router setup:

Note: The absolute port numbers do not matter. The key is consistency - the same port number must be used for a specific function every time it is used.

1. Assign the radio control virtual COM port. Click the **Set** button and select your radio from the drop down box. Uncheck the **Disable router queries** box.
2. Assign a port for WinKey.
3. Assign a port for PTT if you intend to use the ACLog DVK or separate digital mode software.



4. On the **PTT/FSK** tab, set **PTT1** for VOICE, **PTT1 or QSK** for CW and **PTT2** for FSK/DIGITAL.
5. Save the settings to a preset by selecting **Preset | Save as**. Choose a position and name it ACLog.

## ACLog setup:

1. Click **Settings | Rig Interface** to configure the radio interface.

Rig Interface Setup

Select Rig:

- Ten Tec Fnt Phl
- Ten Tec Pegasus
- Yaesu
- Yaesu 757 GX II
- Yaesu 890
- Yaesu 920
- Yaesu 990
- Yaesu 1000 D
- Yaesu 1000
- Yaesu FTdx9000

Comm Port:  1  2  3  4  5  6  7  8

Baud Rate (k):  1.2  2.4  4.8  9.6  14.4  19.2  28.8

Parity:  Odd  None  Even

Data Bits:  7  8

Connection Power:  None  RTS  DTR

Radio Polling Rate:  100 ms  500 ms

2. Select your Rig
3. Select the Port you assigned for Control in Router
4. Set the Baud Rate, Data Bits, Parity and Stop Bits settings required by your radio.
5. Click Done to save your settings

Keying Options

None

RTS Serial

DTR

WinKey

Printer Parallel

6. Click **Settings | Transmit | CW Setup**

7. Select WinKey and click Configure WinKey.

WinKey Setup

Com Port:

8. Set the port for WinKey and click Done to save your settings.

9. If you intend to use the ACLog DVK, click **Settings | Transmit | Phone Setup**
10. Select RTS and the Port you assigned to PTT in Router.
11. Click Done to save your settings.

RTS  DTR  Parallel